

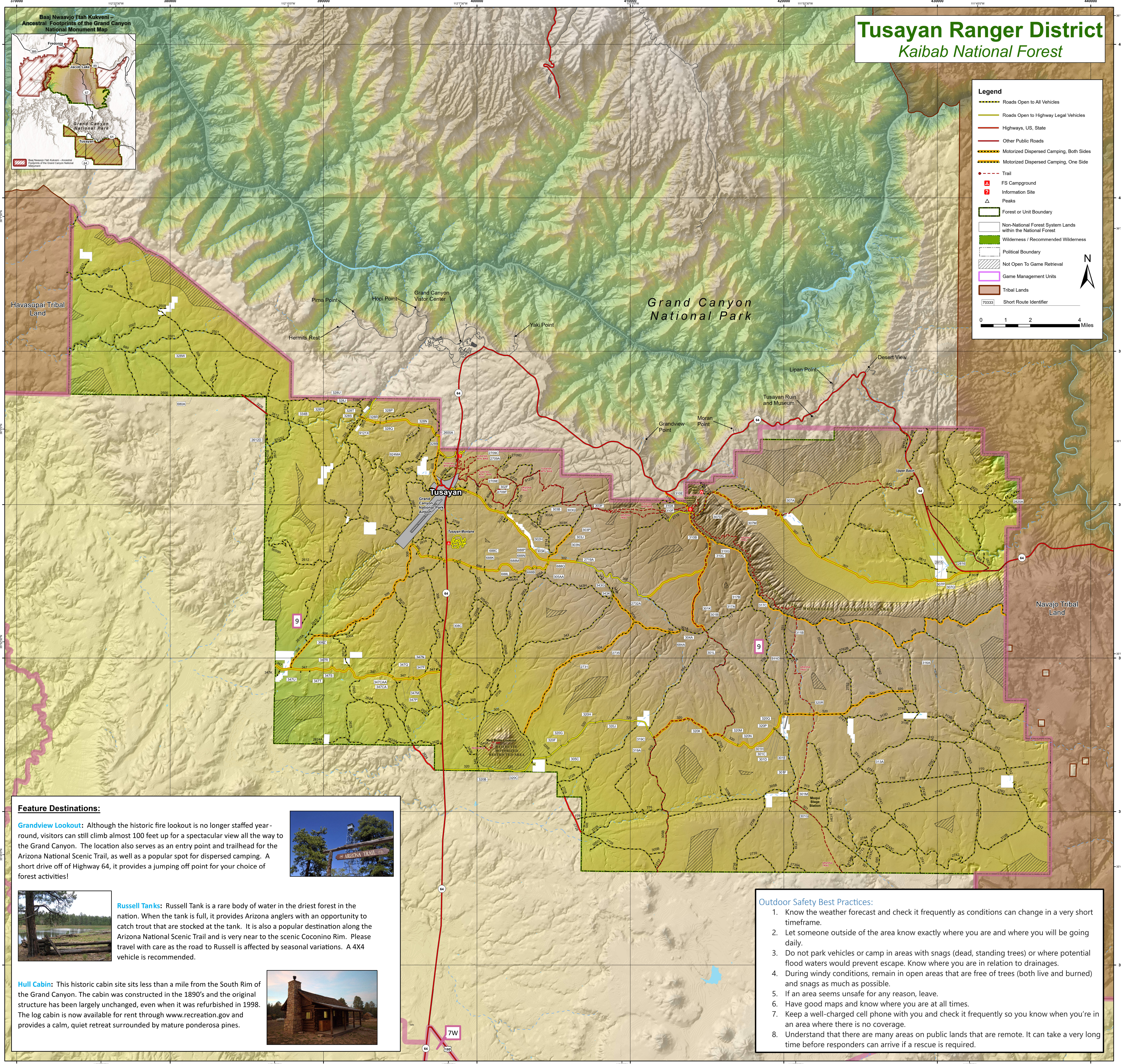
Tusayan Ranger District

Kaibab National Forest

Legend

- Roads Open to All Vehicles
- Roads Open to Highway Legal Vehicles
- Highways, US, State
- Other Public Roads
- Motorized Dispersed Camping, Both Sides
- Motorized Dispersed Camping, One Side
- Trail
- FS Campground
- Information Site
- Peaks
- Forest or Unit Boundary
- Non-National Forest System Lands within the National Forest
- Wilderness / Recommended Wilderness
- Political Boundary
- Not Open to Game Retrieval
- Game Management Units
- Tribal Lands
- Short Route Identifier

0 1 2 4 Miles



Travel Map Purpose and Use

Note: This map is not the official Motor Vehicle Use Map (MVUM). The map is a travel aid designed for use on mobile devices, such as smartphones or tablets. The roads depicted on this Travel Map are the same as the road system displayed on the MVUM. It is intended to supplement, not replace, the MVUM.

The MVUM is the legal document and final authority for displaying where it is legal to drive a motor vehicle on National Forest System lands. The MVUM is republished every year; be sure that you have the most current version. MVUMs are available at the local Forest Service offices or may be downloaded from our website.

Map Limitations

This travel map and its underlying geospatial data are an aid to motorized travel and should not be used for determining ownership, legal boundaries, jurisdictions, or restricted areas. This map does not display non-motorized or over-snow uses.

Designation of a road as "open" does not guarantee that it is passable. Weather conditions and natural events sometimes render designated roads impassable for extended periods. Many open roads receive little to no maintenance and may only be passable with high-clearance, all-wheel drive vehicles, or not at all.

The U.S. Forest Service makes no warranty, expressed or implied, nor assumes any liability or responsibility for the accuracy, reliability, completeness, or utility of these geospatial data, or for the improper or incorrect use of those data.

Operator Responsibilities

Operating a motor vehicle involves inherent risk and natural hazards are common. Drivers should exercise caution, anticipate hazards, and make adjustments as needed for current conditions (rough and rocky surfaces, snow, mud, and sand). Roads are not plowed during winter. Drivers should be aware of their vehicle's limitations, and be prepared to turn around. Use extreme caution at low water crossings, especially downstream of recent wildfires where flashfloods are possible. You are responsible for damages, injury or death caused by your actions. Take care to protect yourself and those around you.

Much of the Kaibab National Forest is remote and cellular telephone service is poor or not available in many areas. Medical and other emergency services may have long response times or not be readily available. Motor vehicle operators should be prepared with adequate food, water, warm clothing, first aid supplies, and other needed equipment. Be prepared and check the weather forecast <http://www.weather.gov/lgt/>.

Prohibitions

Driving Off of a Designated Open Road: Only the routes that are depicted on the current MVUM are open to public motor vehicle use (36 CFR 261.13). Travel off of designated roads on National Forest System lands is prohibited. This prohibition applies regardless of the presence or absence of signs displaying designations for motor vehicle use. Many routes are signed with a numbered route marker, but only the routes displayed on the current MVUM are "open" for motor vehicle use.

Resource Damage: It is prohibited to operate a motor vehicle on National Forest System lands in a manner that damages or unreasonably disturbs the land, wildlife, or resources (36 CFR 261.12 (h)). It is illegal to collect, damage, or displace items of archeological or historical nature (43 CFR Part 10 - Native American Graves Protection and Repatriation Regulations).

Closures: Designated roads, trails, and areas may be subject to temporary or emergency closures to protect life, health, and safety, or natural or cultural resources. You must comply with notification signs of such restrictions (36 CFR 23.23 (b), 36 CFR 261.12 (subpart B)).

Violations of 36 CFR 261.13 are subject to a fine of up to \$5,000, or imprisonment for up to 6 months, or both (18 U.S.C. 3571(e)). Motor vehicle operators are responsible for compliance with all applicable federal, state, and local laws.

Off-Highway Vehicle Regulations

In Arizona, OHVs must be titled, licensed and insured. The Arizona Department of Transportation, Motor Vehicle Division (MVD) is the agency that issues certificates of title, registration, license plates, and OHV decals. Out-of-state residents may use an out-of-state OHV for up to 30 days in Arizona if the vehicle displays a current decal or registration from the person's home state.

OHV Decal: The annual purchase of an Arizona OHV decal is required to operate OHVs on public and state lands.

Street Legal OHVs: Arizona state law permits OHVs to be driven legally on public roads and highways when they meet registration, license, and equipment requirements. Street legal OHVs must display Arizona license plates bearing the letters "M-C".

In the context of this Travel Map, "street legal" OHVs may be operated on any open road. Decal only (i.e., non-street legal) OHVs may only be driven on roads designated for "all vehicles"; they are not authorized for roads designated as "high way-legal vehicles only." Unlicensed drivers may only operate OHVs on routes designated "all vehicles" regardless of vehicle licensing. For more information about OHV regulations, go to <https://www.azgfd.com/ohv>.

INFORMATION SOURCES

Tusayan Ranger District
176 Lincoln Log Loop
P.O. Box 30268
Grand Canyon, AZ 86023
(928) 638-2443

Williams Ranger District
742 South Clover Road
Williams, Arizona 86046
(928) 635-5600

Kaibab National Forest Supervisor's Office
(928) 635-6200
www.fs.usda.gov/kaibab
Arizona State Parks
(602) 542-4174
<http://azstateparks.com/OHV>

Arizona Game and Fish Department
(528) 774-5045
(602) 942-3000
www.azgfd.com

Coconino County Sheriff
(928) 774-4252
(928) 774-5045
(800) 338-7888
www.coconino.az.gov/325/Sheriffs-Office

Grand Canyon National Park
(928) 638-7888
<https://www.nps.gov/grca>

In the event of emergency DIAL 911

Feature Destinations:

Grandview Lookout: Although the historic fire lookout is no longer staffed year-round, visitors can still climb almost 100 feet up for a spectacular view all the way to the Grand Canyon. The location also serves as an entry point and trailhead for the Arizona National Scenic Trail, as well as a popular spot for dispersed camping. A short drive off of Highway 64, it provides a jumping off point for your choice of forest activities!

Russell Tanks: Russell Tank is a rare body of water in the driest forest in the nation. When the tank is full, it provides Arizona anglers with an opportunity to catch trout that are stocked at the tank. It is also a popular destination along the Arizona National Scenic Trail and is very near to the scenic Coconino Rim. Please travel with care as the road to Russell is affected by seasonal variations. A 4X4 vehicle is recommended.

Hull Cabin: This historic cabin site sits less than a mile from the South Rim of the Grand Canyon. The cabin was constructed in the 1890's and the original structure has been largely unchanged, even when it was refurbished in 1998. The log cabin is now available for rent through www.recreation.gov and provides a calm, quiet retreat surrounded by mature ponderosa pines.

Outdoor Safety Best Practices:

1. Know the weather forecast and check it frequently as conditions can change in a very short timeframe.
2. Let someone outside of the area know exactly where you are and where you will be going daily.
3. Do not park vehicles or camp in areas with snags (dead, standing trees) or where potential flood waters would prevent escape. Know where you are in relation to drainages.
4. During windy conditions, remain in open areas that are free of trees (both live and burned) and snags as much as possible.
5. If an area seems unsafe for any reason, leave.
6. Have good maps and know where you are at all times.
7. Keep a well-charged cell phone with you and check it frequently so you know when you're in an area where there is no coverage.
8. Understand that there are many areas on public lands that are remote. It can take a very long time before responders can arrive if a rescue is required.

Get Dirty
Go straight through mud puddles while maintaining a steady speed. Don't get stuck.

No Shortcuts
Switchbacks are designed to maintain the stability of a trail, cutting them destroys their integrity.

Be Sensitive
Wetlands are important and sensitive areas for wildlife and people. Please avoid them.

Install GPS-enabled maps on your smartphone or tablet

Get the app - First, install the **Avenza PDF Maps** app on your smartphone or tablet. The app is available free from the Apple Store (Apple), or from the Google Play Store (Android). Use the QR Code Reader in the app to scan the box below.

This QR code will take you to the Kaibab digital MVUM and Travel Aid download page. From here you can download all of the Forest digital maps and Garmin Travel aids.

The Travel Map includes many features not included on the MVUM, and its road, trail, and area designations are identical to those depicted on the current MVUM. However, the Travel Map is not the "official MVUM", and should be considered to be a supplement to, not a substitute for, the MVUM. All map content is provided by the Kaibab National Forest.

A WiFi connection is recommended for this large download.

©2018 - Map content provided by Kaibab National Forest is free, but your wireless carrier may assess data service charges.

USDA is an equal opportunity provider, employer, and lender.

Forest Service
DEPARTMENT OF AGRICULTURE

tread lightly!
LEAVING A GOOD IMPRESSION

