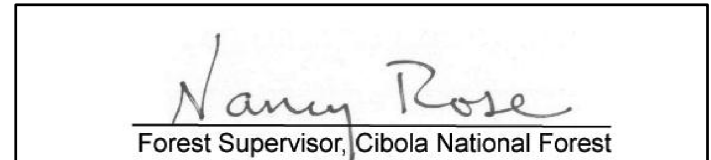


**PURPOSE AND CONTENTS OF THIS MAP**

The designations shown on this motor vehicle use map (MVUM) were made by the responsible official pursuant to 36 CFR 212.51; are effective as of the date of this MVUM; and will remain in effect until superseded by the next year's MVUM.



It is the responsibility of the user to acquire the current MVUM. This map shows the National Forest System roads, National Forest System trails, and the areas on National Forest System lands in the Mount Taylor Ranger District of the Cibola National Forest that are designated for motor vehicle use pursuant to 36 Code of Federal Regulations (CFR) 212.51. This map also contains a list of those designated roads, trails, and areas; the types of vehicles that are allowed on each route; and in each area, and any seasonal restrictions that apply on those routes and in those areas.

Designation of a road, trail, or area for motor vehicle use by a particular class of vehicle under 36 CFR 212.51 should not be interpreted as encouraging or inviting use or implying that the road, trail or area is passable, actively maintained, or safe for travel. Motor vehicle designations include parking along designated routes and at facilities associated with designated routes when it is safe to do so and when not causing damage to National Forest System resources. Seasonal weather conditions and natural events may render designated routes and trails impassable for extended periods. Designated areas may contain dangerous or impassable terrain. Many designated roads and trails may be passable only by high-clearance vehicles or four-wheel-drive vehicles. Maintenance of designated roads and trails will depend on available resources, and many may receive little maintenance.

This motor vehicle use map identifies those roads, trails, and areas designated for the motor vehicle use under 36 CFR 212.51 for the purpose of enforcing the prohibition at 36 CFR 261.13. This is a limited purpose. The other public roads are shown for information and navigation purposes only and are not subject to designation under the Forest Service travel management regulation.

These designations apply only to National Forest System roads, National Forest System trails, and areas on National Forest System lands.

**Legend**

- Roads Open to Highway Legal Vehicles
- Roads Open to All Vehicles
- Trails Open to Motorcycles Only
- Special Vehicle Designation
- Seasonal Designation (See Table)
- Dispersed Camping (See below for more DC information)
- Interstate
- Highways, U.S. State
- Other Public Roads
- Short Route Identifier
- FS Campground
- Information Site
- Peaks
- Forest or Unit Boundary
- National Forest System Lands
- Non-National Forest System Lands within the National Forest
- Political Boundary

**PROHIBITIONS**

It is prohibited to possess or operate a motor vehicle on National Forest System lands on the Mount Taylor Ranger District of the Cibola National Forest other than in accordance with these designations (CFR 261.13).

Violators of 36 CFR 261.13 are subject to a fine of up to \$5,000, imprisonment for up to 6 months, or both (18 U.S.C. 3571(e)). This prohibition applies regardless of the presence or absence of signs.

This map does not display nonmotorized uses, over-snow uses, or other facilities and attractions on the Mount Taylor Ranger District of the Cibola National Forest. Obtain forest visitor information from the local national forest office.

Designated roads, trails and areas may also be subject to temporary, emergency closures. As a visitor, you must comply with signs notifying you of such restrictions. A national forest may issue an order to close a road, trail or area on a temporary basis to protect the life, health, or safety of forest visitors or the natural or cultural resources in these areas. Such a temporary and/or emergency closure is consistent with the Travel Management Rule (36 CFR 212.52 (b), 36 CFR 261 subpart B).

The designation "road or trail open to all motor vehicles" does not supersede State traffic law.

**EXPLANATION OF LEGEND ITEMS**

**Roads Open to Highway Legal Vehicles Only:**  
These roads are open only to motor vehicles licensed under State law for general operation on all public roads within the state.

**Roads Open to All Vehicles:**  
These roads are open to all motor vehicles, including smaller off-highway vehicles that may not be licensed for highway use (but not to oversize or overweight vehicles under State traffic law).

**Trails Open to Motorcycles Only:**  
These trails are open only to motorcycles. Sidecars are not permitted.

**Special Vehicle Designation:**  
This symbol indicates the trail is open to classes of vehicles other than those listed above. All trails on the Mount Taylor Ranger District, Cibola National Forest with the Special Vehicle Designation symbol are open to motor vehicles 65 inches or less in width.

**Seasonal Designation:**  
This symbol, used in conjunction with one of the other road or trail symbols, indicates that the road or trail is open only during certain portions of the year. Refer to Seasonal Designation Table for further instructions.

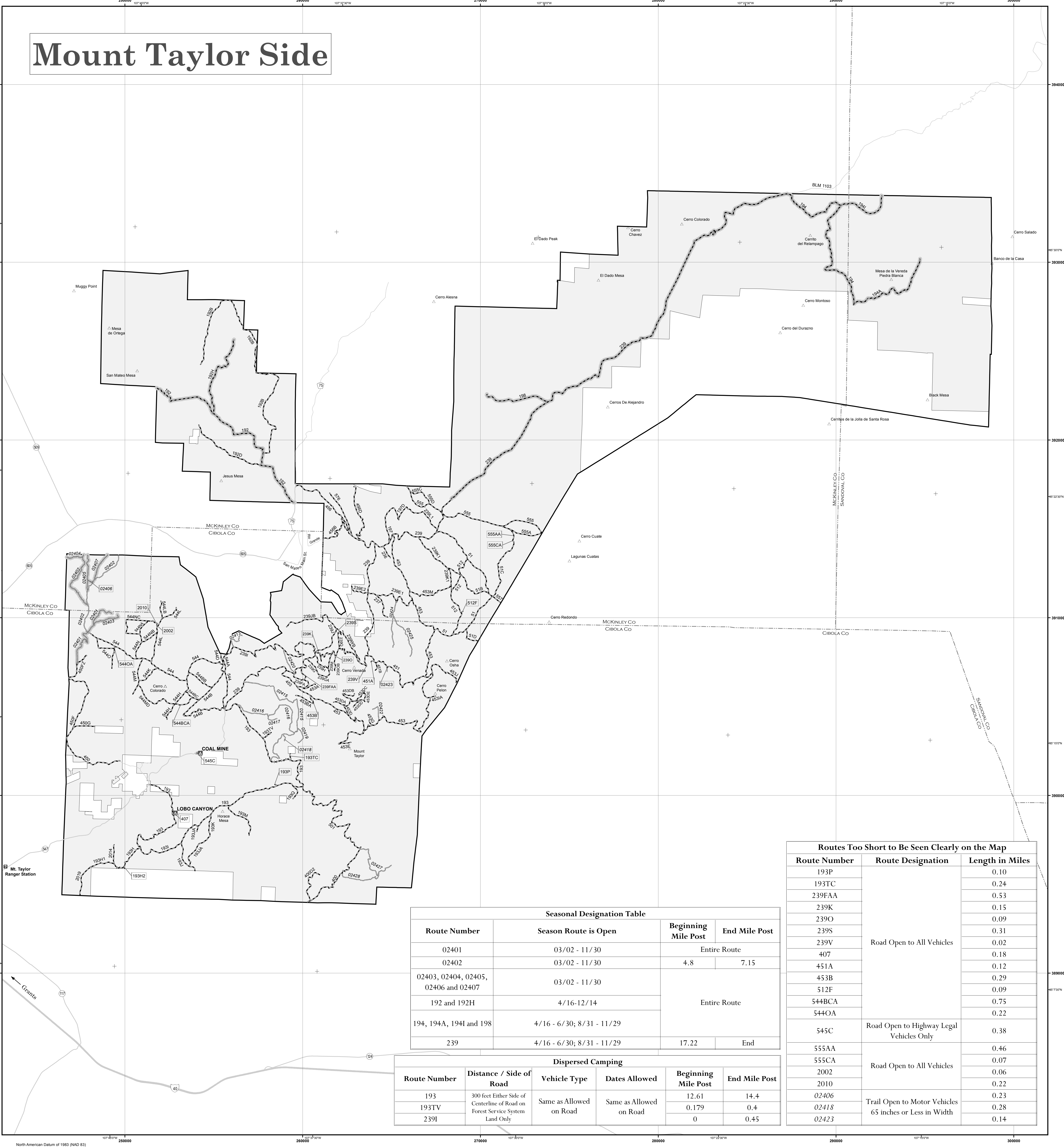
**Dispersed Camping:**  
This symbol is used along with a designated road or trail to indicate limited cross-county motor vehicle use within a 300 feet of that route, solely for the purpose of dispersed camping. The dots indicate where this activity is permitted. They may be on the left, right, or both sides of the route.

**Other Public Roads and Trails:**  
Interstate  
Highways, U.S. State  
Other Public Roads

These symbols are used to show routes the Forest Service does not have jurisdiction over and has not designated for motorized use. These symbols are part of the reference layers showing connections to towns and cities outside the forest boundary.

**Short Route Identifier:**  
[70333]  
This symbol is used for roads that are too short to show a symbol type on the map. The symbol contains the number of the road or trail. Users should refer to the corresponding number in the Short Route Table for designation information.

# Mount Taylor Side



Route Number	Season Route is Open	Beginning Mile Post	End Mile Post
02401	03/02 - 11/30	Entire Route	
02402	03/02 - 11/30	4.8	7.15
02403, 02404, 02405, 02406 and 02407	03/02 - 11/30	Entire Route	
192 and 192H	4/16-12/14	Entire Route	
194, 194A, 194I and 198	4/16 - 6/30; 8/31 - 11/29	Entire Route	
239	4/16 - 6/30; 8/31 - 11/29	17.22	End

Route Number	Distance / Side of Road	Vehicle Type	Dates Allowed	Beginning Mile Post	End Mile Post
193	300 feet Either Side of Centerline of Road on Forest Service System Land Only	Same as Allowed on Road	Same as Allowed on Road	12.61	14.4
193TV				0.179	0.4
239I				0	0.45

Route Number	Route Designation	Length in Miles
193P		0.10
193TC		0.24
239FAA		0.53
239K		0.15
239O		0.09
239S		0.31
239V	Road Open to All Vehicles	0.02
407		0.18
451A		0.12
453B		0.29
512F		0.09
544BCA		0.75
544OA		0.22
545C	Road Open to Highway Legal Vehicles Only	0.38
555AA		0.46
555CA	Road Open to All Vehicles	0.07
2002		0.06
2010		0.22
02406	Trail Open to Motor Vehicles 65 inches or Less in Width	0.23
02418		0.28
02423		0.14

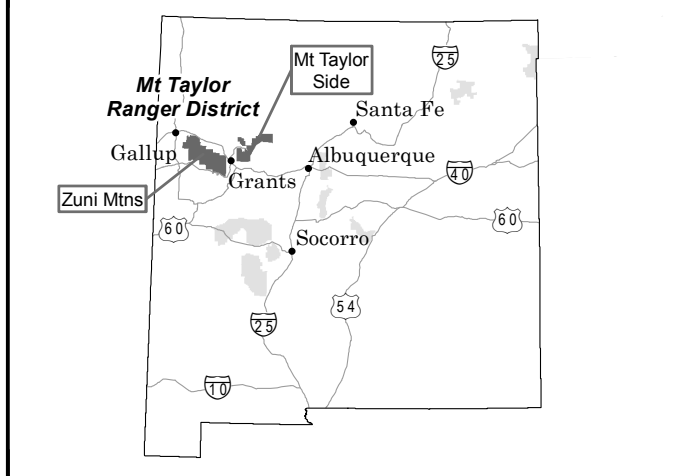
Motor vehicle use off of forest roads and trails for the purpose of dispersed camping is permitted on National Forest System lands for up to 300 feet from the centerline of the road and trail segments shown with the Dispersed Camping symbol and in the table.

Motorized big game retrieval is not permitted off of designated routes on the Mount Taylor Ranger District, Cibola National Forest.

All trails with special designations are open to motor vehicles 65 inches in width or less.

There are no areas open to cross country motorized uses on the Mount Taylor Ranger District, Cibola National Forest.

**VICINITY MAP**



**INFORMATION SOURCES**

**For National Forest Information Contact:**  
Cibola National Forest Supervisor's Office  
2113 Osuna Road NE  
Albuquerque, NM 87113-4650  
(505) 346-3900  
www.fs.fed.us/r3/cibola

**Mount Taylor Ranger Station**  
1800 Lobo Canyon Road  
Grants, NM 87020  
(505) 287-8533

**Emergency Assistance:**  
In the event of emergency call 911  
For Mountain Search and Rescue:

New Mexico State Police  
(505) 768-4100  
For County Law Enforcement:

Cibola County Sheriff's Office  
(505) 287-9476

McKinley County Sheriff's Office  
(505) 863-1410



Travel and recreate with minimum impact.

Respect the environment and the rights of others.

Educate yourself plan and prepare before you go.

Allow for future use of the outdoors by leaving it better than you found it.

Discover the rewards of responsible recreation.

For more information on Tread Lightly!, go to [www.treadlightly.org](http://www.treadlightly.org) or call 1-800-966-9900.

In accordance with Federal civil rights law and U.S. Department of Agriculture (USDA) civil rights regulations and policies, the USDA, its Agencies, offices, and employees, and institutions participating in or administering USDA programs are prohibited from discriminating based on race, color, national origin, religion, sex, gender identity (including gender expression), sexual orientation, disability, age, marital status, family/parental status, income derived from a public assistance program, political beliefs, or reprisal or retaliation for prior civil rights activity, in any program or activity conducted or funded by USDA (not all bases apply to all programs). Remedies and complaint filing deadlines vary by program or incident.

Persons with disabilities who require alternative means of communication for program information (e.g., Braille, large print, audiotape, American Sign Language, etc.) should contact the responsible Agency or USDA's TARGET Center at (202) 720-2600 (voice and TTY) or contact USDA through the Federal Relay Service at (800) 877-8339. Additionally, program information may be made available in languages other than English.

To file a program discrimination complaint, complete the USDA Program Discrimination Complaint Form, AD-3027, found online at [http://www.ascr.usda.gov/complaint\\_filing\\_cust.html](http://www.ascr.usda.gov/complaint_filing_cust.html) and at any USDA office or write a letter addressed to USDA and provide in the letter all of the information requested in the form. To request a copy of the complaint form, call (866) 632-9992. Submit your completed form or letter to USDA by: (1) mail: U.S. Department of Agriculture, Office of the Assistant Secretary for Civil Rights, 1400 Independence Avenue, SW, Washington, D.C. 20250-9410; (2) fax: (202) 690-7442; or (3) email: [program.intake@usda.gov](mailto:program.intake@usda.gov). USDA is an equal opportunity provider, employer and lender.