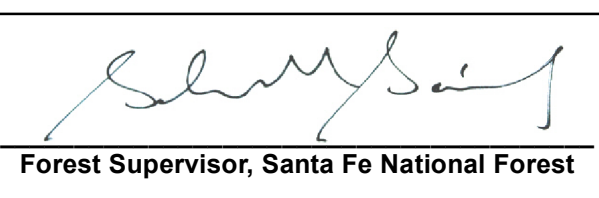


PURPOSE AND CONTENTS OF THIS MAP

The designations shown on this motor vehicle use map (MVUM) were made by the responsible official pursuant to 36 CFR 212.51, are effective as of the date on the front cover of this MVUM, and will remain in effect until superseded by next year's MVUM.



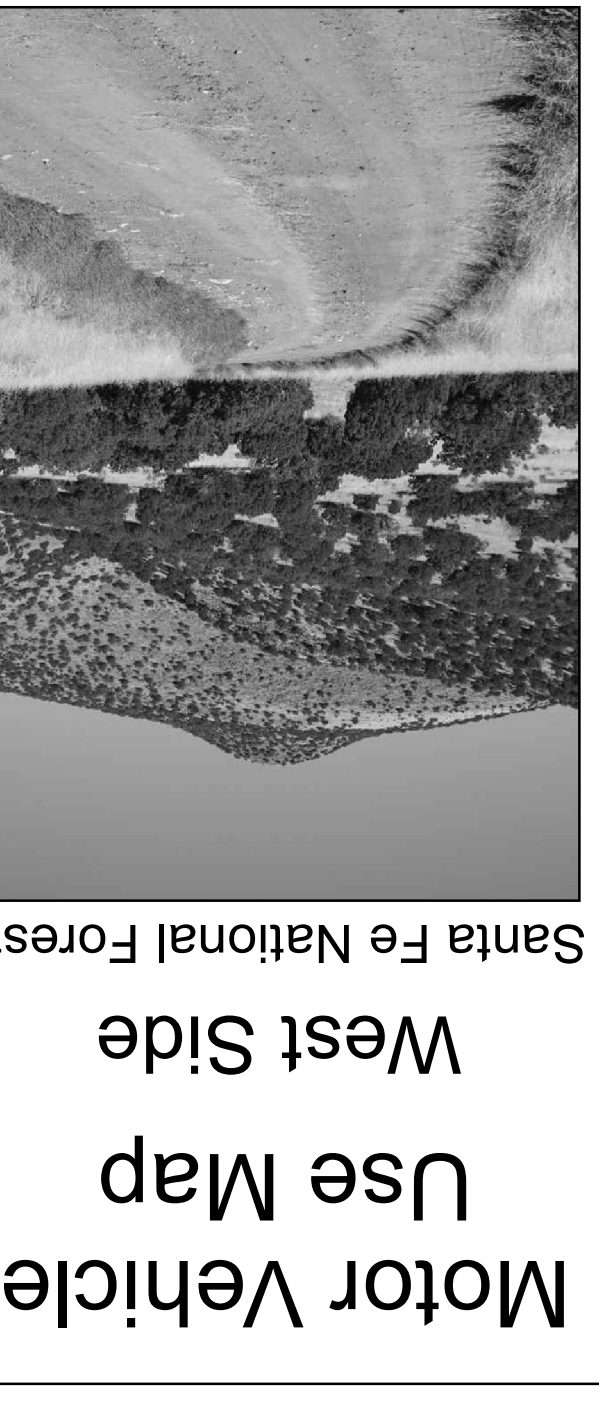
Forest Supervisor, Santa Fe National Forest

It is the responsibility of the user to acquire the current MVUM. This MVUM shows the National Forest System roads, National Forest System trails, and the areas on National Forest System lands in the Santa Fe National Forest that are designated for motor vehicle use pursuant to 36 CFR 212.51. This MVUM also identifies the vehicle classes allowed on each route and in each area, and any seasonal restrictions that apply on those routes and in those areas.

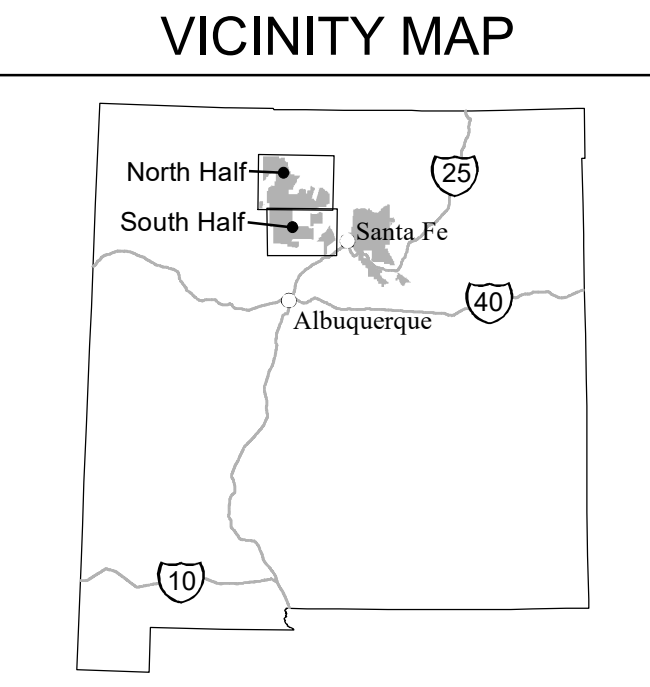
Designation of a road, trail, or area for motor vehicle use by a particular class of vehicle under 36 CFR 212.51 should not be interpreted as encouraging or inviting use or implying that the road, trail, or area is suitable, actively maintained, or safe for travel. Motor vehicle designations include parking along designated routes and at facilities associated with designated routes when it is safe to do so and when not causing damage to National Forest System resources. Seasonal weather conditions and natural events may render designated roads and trails impassable for extended periods. Designated areas may contain dangerous or impassable terrain. Many designated roads and trails may be passable only by high-clearance vehicles or four-wheel-drive vehicles. Maintenance of designated roads and trails will depend on available resources, and many may receive little maintenance.

This motor vehicle use map identifies these roads, trails, and areas designated for the motor vehicle use under 36 CFR 212.51 for the purpose of enforcing the prohibition at 36 CFR 261.13. This is a limited purpose. The other public roads are shown for information and navigation purposes only and are not subject to designation under the Forest Service travel management regulation.

These designations apply only to National Forest System roads, National Forest System trails, and areas on National Forest System lands.



Motor Vehicle Use Map
West Side
Santa Fe National Forest



INFORMATION SOURCES

Santa Fe National Forest
Supervisor's Office
11 Forest Lane
Santa Fe, New Mexico 87508
Phone 505-438-5300
<https://www.fs.usda.gov/santafe/>

Coyote Ranger District
Private Drive 1707 Bldg 20
Coyote, NM 87012
Phone 575-338-5256

Espanola Ranger District
18537 US 84/285, Ste. B
Espanola, NM 87532
Phone 505-753-5311

Cuba Ranger District
048 County Road 11
Cuba, NM 87013
Phone 575-289-3264

Peconic/Las Vegas Ranger District
432 South Main Street
Peconic, NM 87552
Phone 505-757-6121

Jemez Ranger District
051 Woody Lane
Jemez Springs, NM 87025
Phone 575-829-3635

Las Vegas Office
1628 North 7th Street
Las Vegas, NM 87701
Phone 505-425-3634

In the event of emergency call 911



treadlightly!
LEAVY A GOOD IMPRESSION

Travel and recreate with minimum impact.

Respect the environment and the rights of others.

Educate yourself plan and prepare before you go.

Allow for future use of the outdoors by leaving it better than you found it.

Discover the rewards of responsible recreation.

For more information on Tread Lightly!, go to www.treadlightly.org or call 1-800-968-9900.

In accordance with Federal civil rights law and U.S. Department of Agriculture (USDA) civil rights regulations and policies, the USDA, its Agencies, offices, and employees, and institutions participating in or administering USDA programs are prohibited from discriminating based on race, color, national origin, religion, sex, gender identity (including gender expression), sexual orientation, disability, age, marital status, family/parental status, income derived from a public assistance program, political beliefs, or reprisal or retaliation for prior civil rights activity, in any program or activity conducted or funded by USDA (not all bases apply to all programs). Remedies and complaint filing deadlines vary by program or incident.

Persons with disabilities who require alternative means of communication for program information (e.g., Braille, large print, audiotape, American Sign Language, etc.) should contact the responsible Agency or USDA's TARGET Center at (202) 720-2600 (voice and TTY) or contact USDA through the Federal Relay Service at (800) 877-8339. Additionally, program information may be made available in languages other than English.

Persons with disabilities who require alternative means of communication for program information (e.g., Braille, large print, audiotape, American Sign Language, etc.) should contact the responsible Agency or USDA's TARGET Center at (202) 720-2600 (voice and TTY) or contact USDA through the Federal Relay Service at (800) 877-8339. Additionally, program information may be made available in languages other than English.

To file a program discrimination complaint, complete the USDA Program Discrimination Complaint Form, AD-3027, found online at http://www.ascr.usda.gov/complaint_filing_cust.html and at any USDA office or write a letter addressed to USDA and provide the letter with all of the information requested in the form. To request a copy of the complaint form, call (866) 632-9992. Submit your completed form or letter to USDA by: (1) mail: U.S. Department of Agriculture, Office of the Assistant Secretary for Civil Rights, 1400 Independence Avenue, SW, Washington, D.C. 20250-9410; (2) fax: (202) 690-7442; or (3) email: program.inak@usda.gov.

USDA is an equal opportunity provider, employer, and lender.

PROHIBITIONS

It is prohibited to possess or operate a motor vehicle on National Forest System lands on the Santa Fe National Forest other than in accordance with these designations (36 CFR 261.13).

Violators of 36 CFR 261.13 are subject to a fine of up to \$5,000, imprisonment for up to 6 months, or both (18 U.S.C. 3671(a)). This prohibition applies regardless of the presence or absence of signs.

This map does not display nonmotorized uses, over-snow uses, or other facilities and attractions on the Santa Fe National Forest. Obtain forest visitor information from the local national forest office.

Designated roads, trails and areas may also be subject to temporary, emergency closures. As a visitor, you must comply with signs notifying you of such restrictions. A national forest may issue an order to close a road, trail or area on a temporary basis to protect the life, health, or safety of forest visitors or the natural or cultural resources in these areas. Such a temporary and/or emergency closure is consistent with the Travel Management Rule (36 CFR 212.52 (b)).

The designation "road or trail open to all motor vehicles" does not supersede State traffic law.

EXPLANATION OF LEGEND ITEMS

Roads Open to Highway Legal Vehicles Only:
These roads are open only to motor vehicles licensed under State law for general operation on all public roads within the state.

Roads Open to All Vehicles:
These roads are open to all motor vehicles, including smaller off-highway vehicles that may not be licensed for highway use but not to oversize or overweight vehicles under State traffic laws.

Trails Open to Vehicles 50 inches or Less in Width:
Trails open only to motor vehicles less than 50 inches in width at the widest point on the vehicle.

Trails Open to Motorcycles Only:
These trails are open only to motorcycles. Sidecars are not permitted.

Seasonal Designation:
This symbol, used in conjunction with one of the other road or trail symbols, indicates that the road or trail is open only during certain portions of the year. Refer to Seasonal and Special Designation Table for further restrictions.

Dispersed Camping/Game Retrieval:
Dispersed Camping/Game Retrieval, Both Sides
Dispersed Camping/Game Retrieval, Left Side
Dispersed Camping/Game Retrieval, Right Side
This symbol is used along with a designated road or trail to indicate limited cross-country motor vehicle use within a specific distance of that route, solely for the purpose of dispersed camping and/or game retrieval. The dots indicate where this activity is permitted. They may be on the left, right, or both sides of the route. Refer to the Dispersed Camping/Game Retrieval Table for specifics.

Other Public Roads and Trails:
Interstate
Highways, U.S., State
Other Public Roads
These symbols are used to show routes the Forest Service does not have jurisdiction over and has not designated for motorized use. These symbols are part of the reference layers showing connections to towns and cities outside the forest boundary.

Short Route Identifier:
70333
This symbol is used for roads that are too short to show a symbol type on the map. The symbol contains the number of the road or trail. Users should refer to the corresponding number in the Short Route Table for designation information.

Areas Open to Cross-Country Travel:
These are areas on National Forest System land that allow cross-country travel by motorized vehicles. Specific vehicle classes and seasonal designations may be indicated in the Seasonal and Special Designation Table.

When a deer or elk has been legally taken, the individual who legally took the animal may drive or be driven to the downward animal, only in designated areas as shown with the motorized dispersed camping/big game retrieval symbol.

Riparian Areas: Motor vehicle use off a forest road or motorized trail for purposes of dispersed camping or big game retrieval shall be at least 100 feet from a stream, wetland or other body of water.

All roads in developed campgrounds are open to highway legal vehicles only.

Parking safely next to the side of any designated road or trail allowed within 30 feet from the edge of the route surface unless it is within a riparian area.

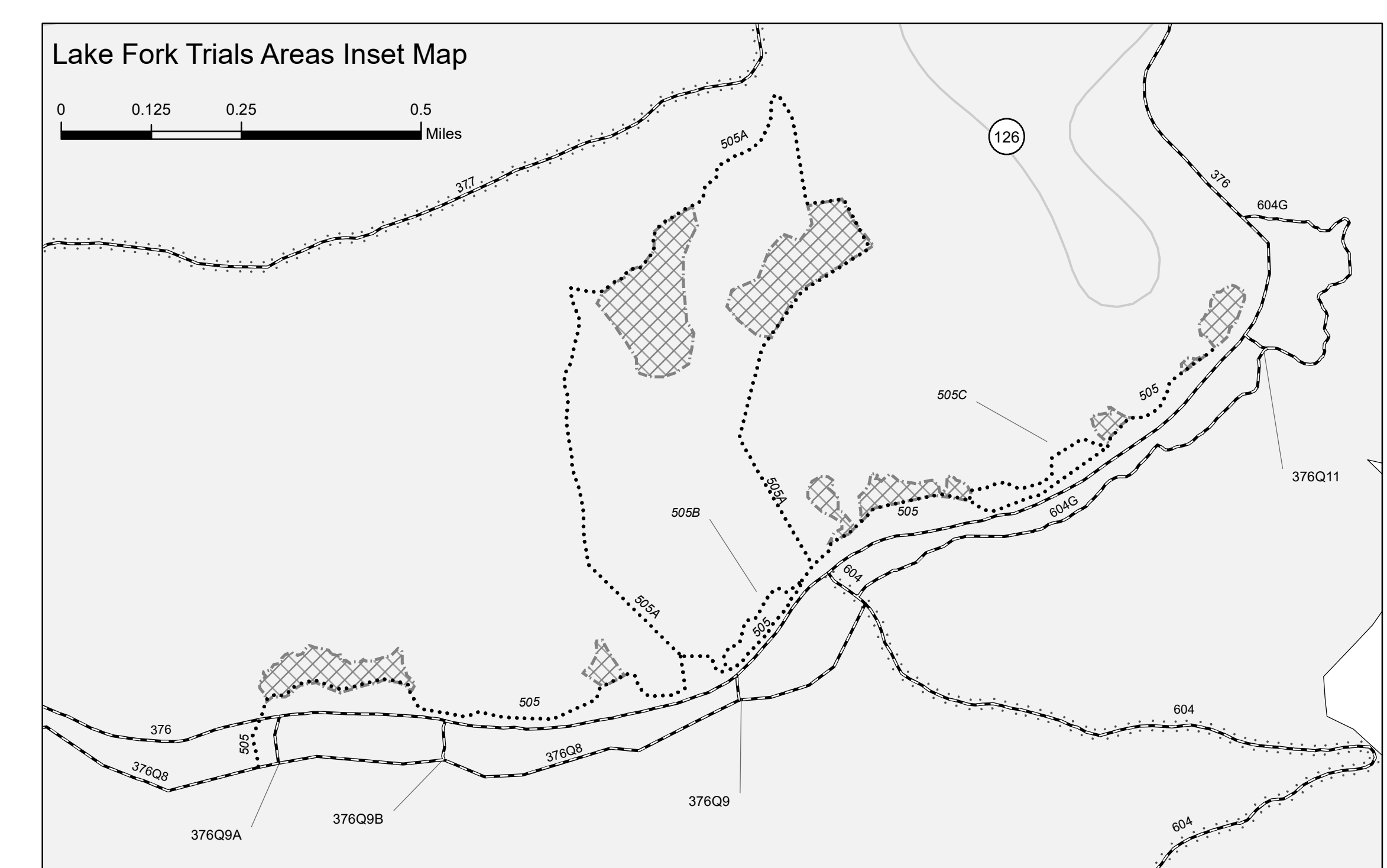
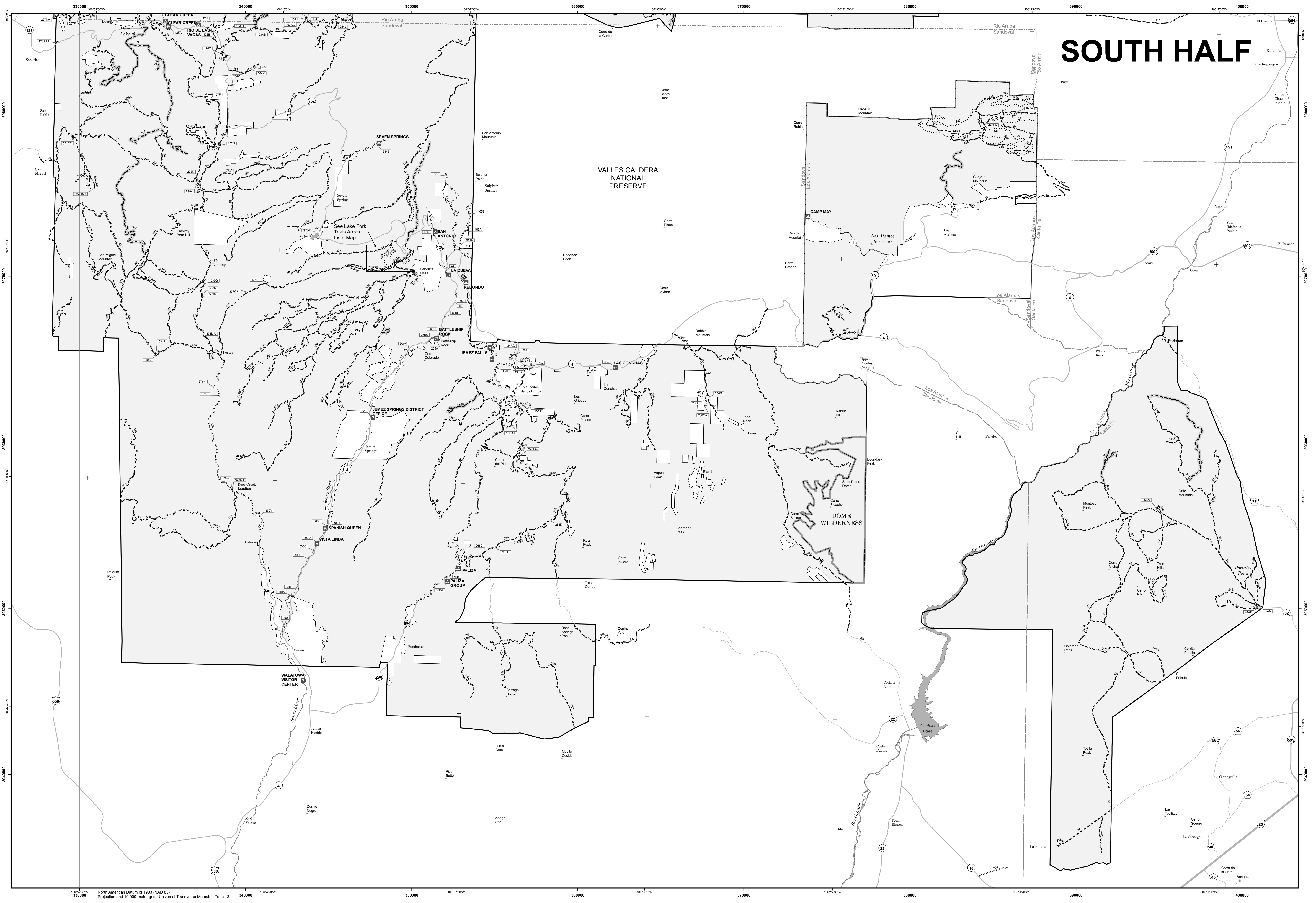
There are no routes with a special designation on the Santa Fe National Forest.

The Lake Fork Trails Motorized Areas are open to motorcycles only.

Coyote, Cuba, Jemez, and the western part of Espanola Ranger Districts are displayed on this map. The eastern part of Espanola Ranger District can be found on the Santa Fe National Forest's Eastside Motor Vehicle Use Map.

Designated roads are subject to wet weather or winter road closures, or may be temporarily closed due to seasonal conditions, project related work, emergency activities, or firefighting operations. Roads designated on this map area are available for motorized use as depicted except when posted as being unsuitable for use due to wet conditions or other administrative or public safety needs. Winter weather closures generally occur in higher elevations starting with the first substantial snowfall in December and can last until April. Please check the Santa Fe National Forest web page for the latest information about status of roads.

The Forest Service manages e-bikes as a motor vehicle. Classes 1, 2, and 3 e-bikes are allowed on roads designated for all classes of motor vehicles and roads designated for motorized mixed use. Classes 1, 2, and 3 e-bikes are also allowed on trails open to all classes of motor vehicles, including motorcycles; and trails designated for those classes of e-bikes.



Dispersed Camping and Game Retrieval					
Road Number	Distance from Road	Side of Road	Vehicles Allowed	Dates Allowed	
10, 103, 103AB, 103AC, 103J1, 104, 104H, 104HA, 104I, 126B, 126W, 126X, 144, 152, 152N, 153, 157, 181, 181B, 181L, 20, 201, 24A, 24AB, 24M, 25KA, 264, 264L, 270, 377, 378, 527, 532, 533, 534, 534C, 534C-F, 534D, 534R, 534V, 539, 604, 604P, 607, 69, 69B, 69C, 70, 94, 98		On National Forest land within 150 feet of designated road's centerline along portions of its length, as illustrated by map symbology	On National Forest land to one side, or both sides, of the designated road, as illustrated by map symbology	Same types as allowed on road	Same dates as allowed on road

Seasonal Vehicle Designations					
Route Number	Legend	Dates Allowed	Beginning Mile Post	Ending Mile Post	
10B, 10BA	Road Open to Highway Legal Vehicles Only, with Seasonal Designation	05/17 - 02/29			44, 634
376	Road Open to All Vehicles, with Seasonal Designation	07/01 - 02/29			46, 845
103J1, 144V, 20F, 20K, 69, 69B, 69C, 98, 98A, 98C	Road Open to All Vehicles, with Seasonal Designation	07/01 - 05/14	As Displayed with Seasonal Designation Symbol on Map		46A, 924
24J, 24N, 24NG, 607A	Road Open to All Vehicles, with Seasonal Designation	08/16 - 02/29			602C, 333
17, 17C, 530, 535F	Road Open to All Vehicles, with Seasonal Designation	09/01 - 02/29			602D, 840
135B	Road Open to All Vehicles, with Seasonal Designation	10/01 - 02/29			
803	Trail Open to Vehicles <= 50" with Seasonal Designation	09/01 - 02/29			

Roads too Short to be Seen Clearly

Road Number	Length in Feet
103AB	1,119
103AC	744
103J1	453
104	449
104H	529
104HA	379
104J	376
126AA	581
126B	623
126X	1,130
13	381
152N	395
157R	296
201K	1,183
26X	53
25KA	1,092
264C	1,314
264J	512
264K	507
264L	597
266C	90
266K	227
267NA	299
376F	275
376G1	211
376H	290
376MA	227
376M11	201
376Q7	427
376O9	183
376O9A	348
376O9B	290
376V	53
376W	106
466FA	971
534CAC	366
534CF	980
534P	1,331
534R	854
534V	739
539A	875
539M	370
539N	185
539Q	206
911A	456

Roads too Short to be Seen Clearly

Roads Open to Highway Legal Vehicles Only		
Road Number	Length in Feet	
105A	634	
105B	312	
106J	634	
10ACA	504	
10CA	348	
10CB	544	
10DA	581	
12FA	908	
12FA	216	
12FB	382	
133AA	1,347	
133C	260	
134AC	444	
134P	317	
265	876	
265A	766	
265B	359	
265C	290	
268C	1,304	
268CA	459	
270CG	570	
286G	1,199	
300	322	
300A	491	
300B	248	
300C	191	
300D	1,162	
300E	422	
300F	206	
300G	317	
300H	253	
300I	98	
300M	551	
301	327	
314B	528	
328	106	
384	412	
44	634	
46	845	
46A	924	
602C	333	
602D	840	

Trails too Short to be Seen Clearly

Trails Open to Motorcycles Only	
Trail Number	Length in Feet
825A	695
505B	1,024
505C	1,299