

OPERATOR RESPONSIBILITIES

Operating a motor vehicle on National Forest System roads, National Forest System trails, and in areas on National Forest System lands carries a greater responsibility than operating that vehicle in a city or other developed setting. Not only must you know and follow all applicable traffic laws, you need to show concern for the environment as well as other forest users. The misuse of motor vehicles can lead to the temporary or permanent closure of any designated road, trail, or area. As a motor vehicle operator, you are also subject to State traffic law, including State requirements for licensing, registration, and operation of the vehicle in question.

Motor vehicle use, especially off-highway vehicle use, involves inherent risks that may cause property damage, serious injury, and possibly death to participants. Drive cautiously and anticipate rough surfaces and features, such as snow, mud, vegetation, and water crossings common to remote driving conditions. By your participation, you voluntarily assume full responsibility for these damages, risks, and dangers. Take care at all times to protect yourself and those under your responsibility.

Much of the Inyo National Forest is remote. Medical assistance may not be readily available. Cellular telephones do not work in many areas of the Inyo National Forest. Take adequate food, water, first-aid supplies, and other equipment appropriate for the conditions and expected weather.

ALWAYS REMEMBER TO RESPECT PRIVATE LAND! PROTECT YOUR PRIVILEGE. STAY ON DESIGNATED ROADS AND TRAILS AND IN DESIGNATED AREAS.

Read and understand this map in its entirety. If you have questions please contact the Inyo National Forest for clarification.

As a motor vehicle operator on a National Forest System road, trail, or area, you must comply with this map, as well as all Federal, State, and local laws and regulations. Compliance with these rules is your responsibility.

PROHIBITIONS

It is prohibited to possess or operate a motor vehicle on National Forest System lands on the Inyo National Forest other than in accordance with these designations (36 CFR 261.13).

Violators of 36 CFR 261.13 are subject to a fine of up to \$5,000, imprisonment for up to 6 months, or both (18 U.S.C. 3571(e)). This prohibition applies regardless of the presence or absence of signs.

This map does not display nonmotorized uses, over-snow uses, or other facilities and attractions on the Inyo National Forest. Obtain forest visitor information from the local national forest office.

Designated roads, trails, and areas may also be subject to temporary, emergency closures. As a visitor, you must comply with signs notifying you of such restrictions. A national forest may issue an order to close a road, trail, or area on a temporary basis to protect the life, health or safety of forest visitors or the natural or cultural resources in these areas. Such a temporary and/or emergency closure are consistent with the Travel Management Rule (36 CFR 212.52 (b), 36 CFR 261 subpart B).

The designation "road or trail open to all motor vehicles" does not supersede State traffic law.

EXPLANATION OF LEGEND ITEMS

Roads Open to Highway Legal Vehicles Only:

These roads are open only to motor vehicles licensed under State law for general operation on all public roads within the State.

Roads Open to All Vehicles:

These roads are open to all motor vehicles, including smaller off-highway vehicles that may not be licensed for highway use (but not to oversize or overweight vehicles under State traffic law).

Trails Open to All Vehicles:

These trails are open to all motor vehicles, including both highway legal and nonhighway legal vehicles.

Trails Open to Vehicles 50" or Less in Width:

These trails are open only to motor vehicles less than 50 inches in width at the widest point on the vehicle.

Trails Open to Motorcycles Only:

These trails are open only to motorcycles. Sidecars are not permitted.

Seasonal Designation:

This symbol, used in conjunction with one of the other road or trail symbols, indicates that the road or trail is open only during certain portions of the year. Refer to Seasonal and Special Designation Table for further instructions.

Other Public Roads and Trails:
Highways, U.S., State
Other Public Roads
Other Public Trails

These symbols are used to show routes the Forest Service does not have jurisdiction over and has not designated for motorized use. These symbols are part of the reference layers showing connections to towns and cities outside the forest boundary.

Short Route Identifier:

[70333]

This symbol is used for routes that are too short to show an actual symbol type on the map. The symbol contains the number of the road or trail. Users should refer to the corresponding number in the Short Route Table for designation information.

Areas Open to Cross Country Travel:

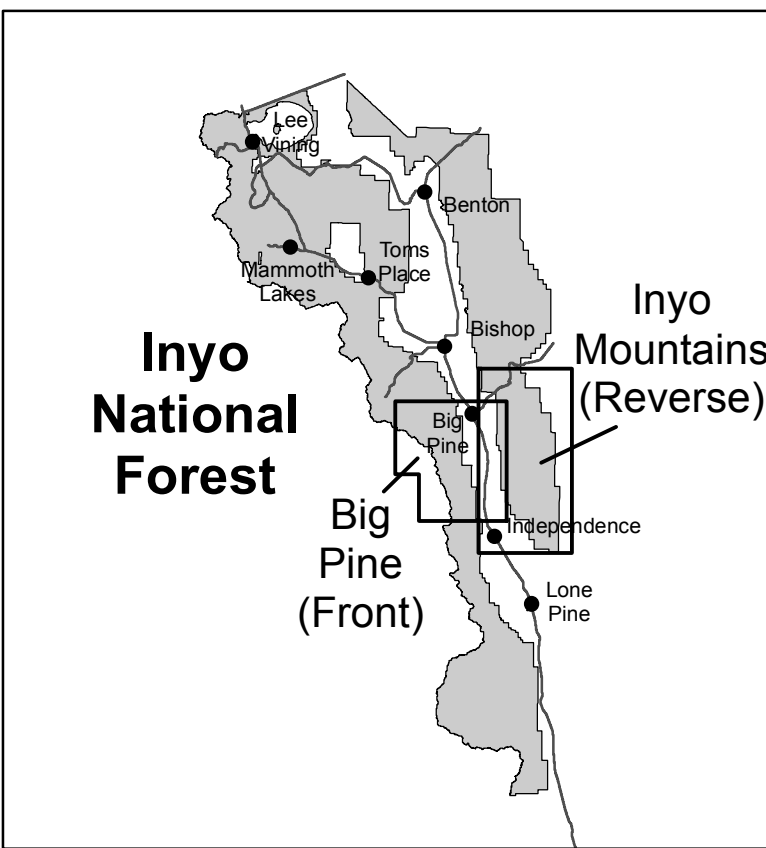
[XXXXXX]

These are areas on National Forest System land that allow cross-country travel by motorized vehicles. Specific vehicle classes and seasonal designations may be indicated in the Seasonal and Special Designation Table.

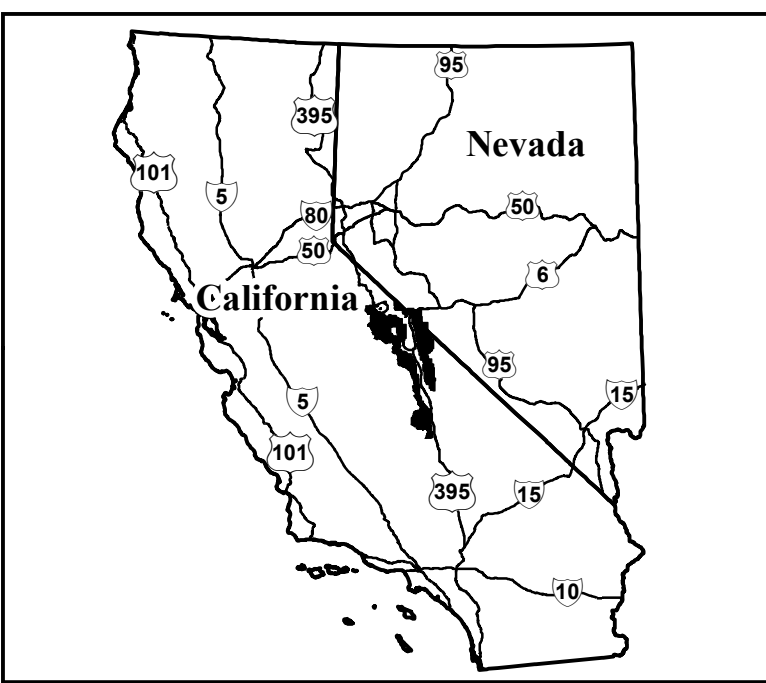
Parking Notes

Motor vehicles may be parked within one vehicle length from the edge of the road surface when it is safe to do so without causing damage to NFS resources or facilities, unless prohibited by state law, a traffic sign, or an order (36 CFR 261.54).

INDEX MAP

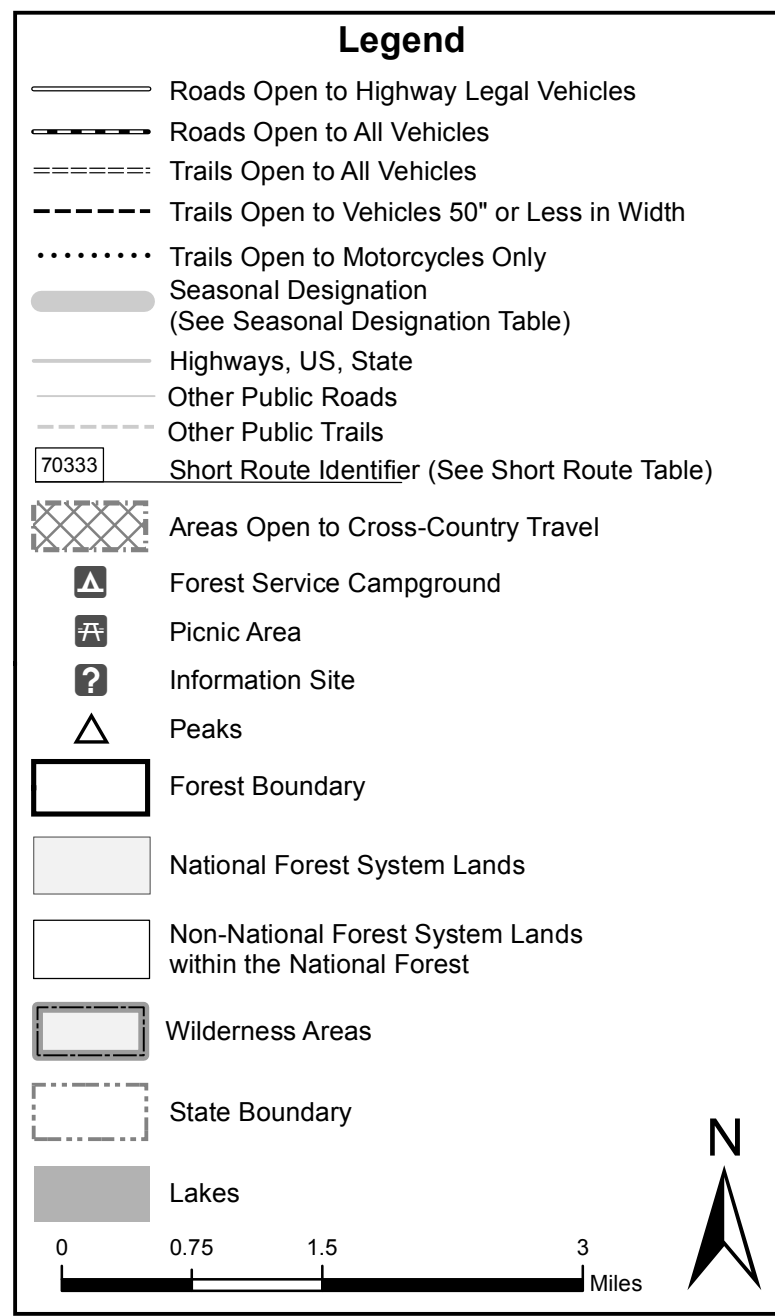


VICINITY MAP



Campground Notes

- All roads within Big Pine Creek Campground are open to Highway Legal Vehicles, Yearlong.
- All roads within Upper and Lower Sage Flat Campgrounds are open to Highway Legal Vehicles, Yearlong.



**Short Route Table - Big Pine Map
Routes Less Than 1,100 Feet**

Trails Open to All Vehicles, Yearlong			
Route Number	Length in Feet	Route Number	Length in Feet
32E303C	883	33E306A	825
32E303E	959	33E312A	391
33E301B	981	33E401B	73
33E301E	690	33E402A	333
33E302A	875	35E412A	240
33E302B	689		

Trails Open to All Vehicles, Seasonally			
Route Number	Length in Feet	Dates Allowed from-to	
33E401C	70	06/01-10/31	

PURPOSE AND CONTENTS OF THIS MAP

The designations shown on this motor vehicle use map (MVUM) were made by the responsible official pursuant to 36 CFR 212.51; are effective as of the date on the front cover of this MVUM; and will remain in effect until superseded by next year's MVUM.

Barbara Drake
Barbara Drake, Inyo National Forest

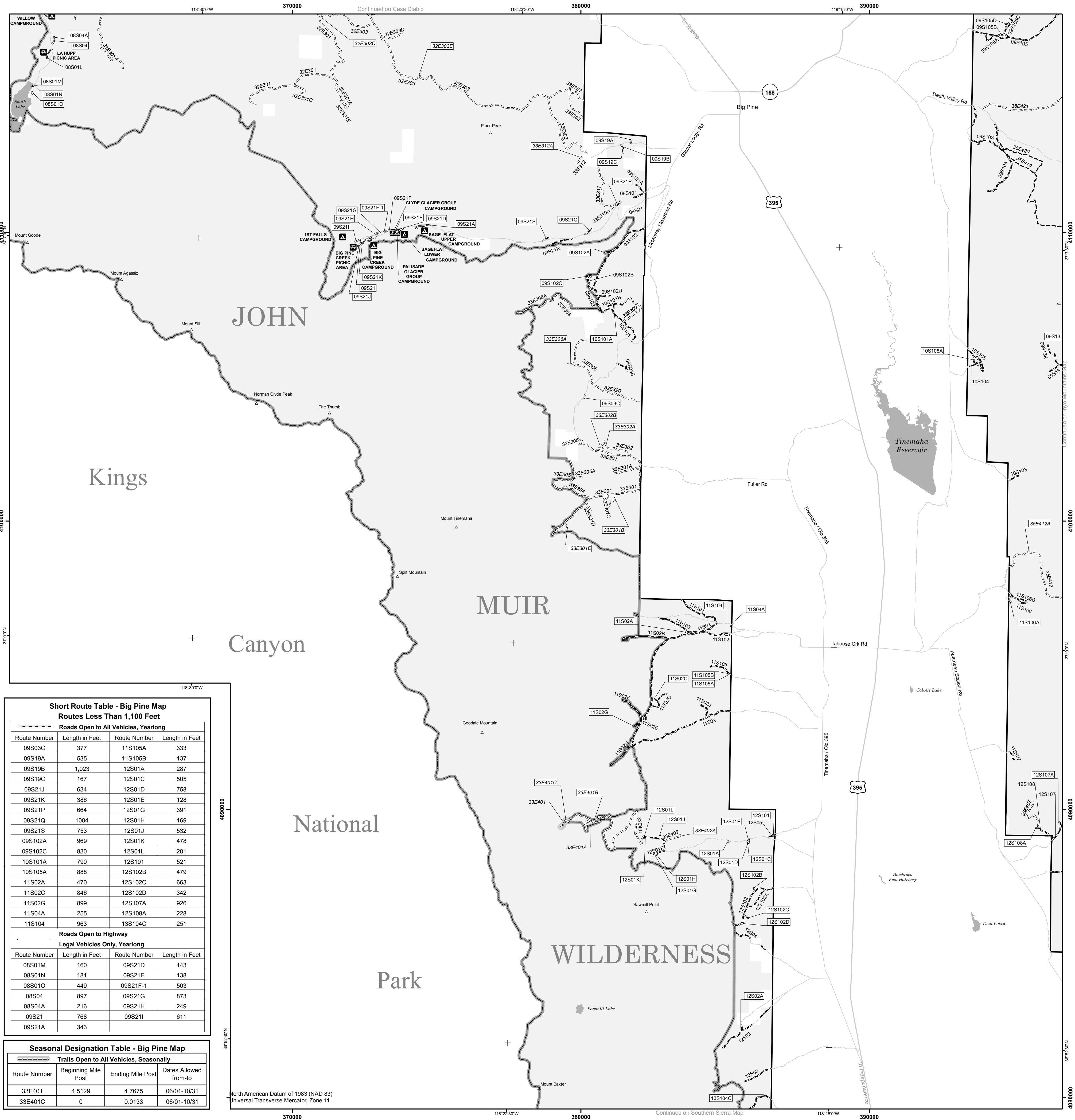
It is the responsibility of the user to acquire the current MVUM. This map shows the National Forest System roads, National Forest System trails, and the areas on National Forest System lands in the Inyo National Forest that are designated for motor vehicle use pursuant to 36 Code of Federal Regulations (CFR) 212.51. This MVUM also identifies the vehicle classes allowed on each route and in each area; and any seasonal restrictions that apply on those routes and in those areas.

Designation of a road, trail, or area for motor vehicle use by a particular class of vehicle under 36 CFR 212.51 should not be interpreted as encouraging or inviting use or implying that the road, trail, or area is passable, actively maintained, or safe for travel. Motor vehicle designations include parking along designated routes and at facilities associated with designated routes when it is safe to do so and when not causing damage to National Forest System resources. Seasonal weather conditions and natural events may render designated roads and trails impassable for extended periods. Designated areas may contain dangerous or impassable terrain. Many designated roads and trails may be passable only by high-clearance vehicles or four-wheel-drive vehicles. Maintenance of designated roads and trails will depend on available resources, and many may receive little maintenance.

This motor vehicle use map identifies those roads, trails, and areas designated for the motor vehicle use under 36 CFR 212.51 for the purpose of enforcing the prohibition at 36 CFR 261.13. This is a limited purpose. The other public roads are shown for information and navigation purposes only and are not subject to designation under the Forest Service travel management regulation.

These designations apply only to National Forest System roads, National Forest System trails, and areas on National Forest System lands.

The U.S. Department of Agriculture (USDA) prohibits discrimination in all its programs and activities on the basis of race, color, national origin, age, disability, and where applicable, sex, marital status, familial status, parental status, religion, sexual orientation, genetic information, political beliefs, reprisal, or because all or part of an individual's income is derived from any public assistance program. (Not all prohibited bases apply to all programs.) Persons with disabilities who require alternative means for communication of program information (Braille, large print, audiotape, etc.) should contact USDA's TARGET Center at (202) 720-2600 (voice and TDD). To file a complaint of discrimination, write to USDA, Director, Office of Civil Rights, 1400 Independence Avenue, S.W., Washington, D.C. 20250-9410, or call (800) 795-3272 (voice) or (202) 720-6382 (TDD). USDA is an equal opportunity provider and employer.



**Short Route Table - Big Pine Map
Routes Less Than 1,100 Feet**

Roads Open to All Vehicles, Yearlong			
Route Number	Length in Feet	Route Number	Length in Feet
09S03C	377	11S105A	333
09S19A	535	11S105B	137
09S19B	1,023	12S01A	287
09S19C	167	12S01C	505
09S21J	634	12S01D	758
09S21K	386	12S01E	128
09S21P	664	12S01G	391
09S21Q	1004	12S01H	169
09S21S	753	12S01J	532
09S102A	969	12S01K	478
09S102C	830	12S01L	201
10S101A	790	12S101	521
10S105A	888	12S102B	479
11S02A	470	12S102C	663
11S02C	846	12S102D	342
11S02G	899	12S107A	926
11S04A	255	12S108A	228
11S104	963	13S104C	251

Roads Open to Highway Legal Vehicles Only, Yearlong			
Route Number	Length in Feet	Route Number	Length in Feet
08S01M	160	09S21D	143
08S01N	181	09S21E	138
08S01O	449	09S21F-1	503
08S04	897	09S21G	873
08S04A	216	09S21H	249
09S21	788	09S21I	611
09S21A	343		

Seasonal Designation Table - Big Pine Map

Trails Open to All Vehicles, Seasonally			
Route Number	Beginning Mile Post	Ending Mile Post	Dates Allowed from-to
33E401	4.5129	4.7675	06/01-10/31
33E401C	0	0.0133	06/01-10/31

Motor Vehicle Use Map
Inyo National Forest
Big Pine & Inyo Mountains

CALIFORNIA 2018 Forest Service

United States Department of Agriculture

INFORMATION SOURCES

Inyo National Forest Website: www.fs.usda.gov/inyo

Forest Supervisor's Office Inyo National Forest 351 Pacu Lane, Suite 200 Bishop, CA 93514 (760) 873-2400 (760) 873-2538 TDD	InterAgency Visitor Center (Intersection of Hwy 395 and Hwy 136) P.O. Box R Lone Pine, CA 93545 (760) 878-6222 (760) 878-6223 TDD
Mammoth Ranger Station & Visitor Center P.O. Box 148 Mammoth Lakes, CA 93546 (760) 924-5500 (760) 924-5531 TDD	Mono Basin Scenic Area Visitor Center P.O. Box 429 Lee Vining, CA 93541 (760) 873-2408 (760) 847-3045 TDD
Mount Whitney Ranger Station P.O. Box 8 Lone Pine, CA 93545 (760) 876-6200 (760) 876-6201 TDD	White Mountain Ranger Station 798 North Main Street Bishop, CA 93514 (760) 873-2500 (760) 873-2501 TDD

In case of medical or law enforcement emergencies, dial 911. Please be advised that many areas of the forest are not covered by regular cell phone service.

Get Forest Service maps on your phone using the map app! Scan the QR code and it will take you to pdf-maps.com where you can download the free map app for both iOS and Android.

treadlightly! LEAVING A GOOD IMPRESSION