

OPERATOR RESPONSIBILITIES

Operating a motor vehicle on National Forest System roads, National Forest System trails, and in areas on National Forest System lands carries a greater responsibility than operating that vehicle in a city or other developed setting. Not only must you know and follow all applicable traffic laws, you need to show concern for the environment as well as other forest users. The misuse of motor vehicles can lead to the temporary or permanent closure of any designated road, trail, or area. As a motor vehicle operator, you are also subject to State traffic laws, including State requirements for licensing, registration, and operation of the vehicle in question.

Motor vehicle use, especially off-highway vehicle use, involves inherent risks that may cause property damage, serious injury, and possibly death to participants. Drive cautiously and anticipate rough surfaces and features, such as snow, mud, vegetation, and water crossings common to remote driving conditions. By your participation, you voluntarily assume full responsibility for these damages, risks, and dangers. Take care at all times to protect yourself and those under your responsibility.

Much of the Klamath National Forest is remote. Medical assistance may not be readily available. Cellular telephones do not work in many areas of the Klamath National Forest. Take adequate food, water, first-aid supplies, and other equipment appropriate for the conditions and expected weather.

ALWAYS REMEMBER TO RESPECT PRIVATE LAND! PROTECT YOUR PRIVILEGE. STAY ON DESIGNATED ROADS AND TRAILS AND IN DESIGNATED AREAS.

Read and understand this map in its entirety. If you have questions please contact the Klamath National Forest for clarification.

As a motor vehicle operator on a National Forest System road, trail, or area, you must comply with this map, as well as all Federal, State, and local laws and regulations. Compliance with these rules is your responsibility.

This map displays the roads, trails and areas designated open for motor vehicle use. For navigational tools refer to Forest transportation maps available at local Forest Service offices.

PROHIBITIONS

It is prohibited to possess or operate a motor vehicle on National Forest System lands on the Klamath National Forest other than in accordance with these designations (36 CFR 261.13).

Violators of 36 CFR 261.13 are subject to a fine of up to \$5,000, imprisonment for up to 6 months, or both (18 U.S.C. 3571(e)). This prohibition applies regardless of the presence or absence of signs.

This map does not display nonmotorized uses, over-snow uses, or other facilities and attractions on the Klamath National Forest. Obtain forest visitor information from the local national forest office.

Designated roads, trails, and areas may also be subject to temporary, emergency closures. As a visitor, you must comply with signs notifying you of such restrictions. A national forest may issue an order to close a road, trail, or area on a temporary basis to protect the life, health or safety of forest visitors or the natural or cultural resources in these areas. Such a temporary and/or emergency closures are consistent with the Travel Management Rule (36 CFR 212.52 (b), 36 CFR 261 subpart B).

The designation "road or trail open to all motor vehicles" does not supersede State traffic law.

PURPOSE AND CONTENTS OF THIS MAP

The designations shown on this motor vehicle use map (MVUM) were made by the responsible official pursuant to 36 CFR 212.51; are effective as of the date on the front cover of this MVUM; and will remain in effect until superseded by next year's MVUM.

John A. Gantner
Forest Supervisor, Klamath National Forest

It is the responsibility of the user to acquire the current MVUM. This map shows the National Forest System roads, National Forest System trails, and the areas on National Forest System lands in the Klamath National Forest that are designated for motor vehicle use pursuant to 36 Code of Federal Regulations (CFR) 212.51. This MVUM also identifies the vehicle classes allowed on each route and in each area; and any seasonal restrictions that apply on those routes and in those areas.

Designation of a road, trail, or area for motor vehicle use by a particular class of vehicle under 36 CFR 212.51 should not be interpreted as encouraging or inviting use or implying that the road, trail, or area is passable, actively maintained, or safe for travel. Motor vehicle designations include parking along designated routes and at facilities associated with designated routes when it is safe to do so and when not causing damage to National Forest System resources. Seasonal weather conditions and natural events may render designated roads and trails impassable for extended periods. Designated areas may contain dangerous or impassable terrain. Many designated roads and trails may be passable only by high-clearance vehicles or four-wheel-drive vehicles. Maintenance of designated roads and trails will depend on available resources, and many may receive little maintenance.

This motor vehicle use map identifies those roads, trails, and areas designated for the motor vehicle use under 36 CFR 212.51 for the purpose of enforcing the prohibition at 36 CFR 261.13. This is a limited purpose. The other public roads are shown for information and navigation purposes only and are not subject to designation under the Forest Service travel management regulation.

These designations apply only to National Forest System roads, National Forest System trails, and areas on National Forest System lands.

PARKING STATEMENT

Motor vehicles may be parked up to 30 feet from the edge of the road surface when it is safe to do so without causing damage to NFS resources or facilities, unless prohibited by signs.

Legend

- Roads Open to Highway Legal Vehicles
- Roads Open to All Vehicles
- Special Vehicle Designation (See Seasonal Table)
- Seasonal Designation (See Seasonal Table)
- Highways, U.S. State
- County, Other Public Roads
- Short Route Identifier (see Short Route Table)
- FS Campground
- Picnic Area
- Information Site
- Peaks
- Forest Boundary
- National Forest System Lands
- Non-National Forest System Lands within the National Forest
- Wilderness Areas
- State Boundary
- Large Lakes and Rivers

0 1 2 Miles

EXPLANATION OF LEGEND ITEMS

Roads Open to Highway Legal Vehicles Only:
 These roads are open only to motor vehicles licensed under State law for general operation on all public roads within the State.

Roads Open to All Vehicles:
 These roads are open to all motor vehicles, including smaller off-highway vehicles that may not be licensed for highway use (but not to oversize or overweight vehicles under State traffic law).

Special Vehicle Designation:
 This symbol indicates the road or trail is open to classes of vehicles other than those listed above. Refer to the Seasonal and Special Designation Table for further instructions.

Seasonal Designation:
 This symbol, used in conjunction with one of the other road or trail symbols, indicates that the road or trail is open only during certain portions of the year. Refer to the Seasonal and Special Designation Table for further instructions.

Other Public Roads and Trails:
 Highways, U.S. State
 Other Public Roads
 Other Public Trails

These symbols are used to show routes the Forest Service does not have jurisdiction over and has not designated for motorized use. These symbols are part of the reference layers showing connections to towns and cities outside the forest boundary.

Short Route Identifier:
 70333
 This symbol is used for routes that are too short to show an actual symbol type on the map. The symbol contains the number of the road or trail. Users should refer to the corresponding number in the Short Route Table for designation information.

Road Number	Route Designation	Length in Feet
16N03	Open to highway legal vehicles only, Yearlong	718
16N13	Open to highway legal vehicles only, Yearlong	223
16N22	Open to highway legal vehicles only, Seasonal	590
16N23A	Open to highway legal vehicles only, Yearlong	1,509
16N23B	Open to highway legal vehicles only, Yearlong	553
16N24	Open to highway legal vehicles only, Yearlong	303
16N28	Open to highway legal vehicles only, Yearlong	192
17N50	Open to highway legal vehicles only, Yearlong	704
45N85F	Open to all Vehicles, Seasonal	1,212
46N15	Open to highway legal vehicles only, Yearlong	631
46N18YC	Open to all Vehicles, Seasonal	826
46N83YB	Open to all Vehicles, Seasonal	1,061
47N85	Open to all Vehicles, Yearlong	156
51D011	Open to all Vehicles, Yearlong	566
51D011A	Open to all Vehicles, Yearlong	273
52D008	Open to all Vehicles, Yearlong	823
52D009	Open to all Vehicles, Yearlong	340
52D010C	Open to all Vehicles, Yearlong	518
52D010D	Open to all Vehicles, Yearlong	202
52D010E	Open to all Vehicles, Yearlong	335
52D011	Open to all Vehicles, Yearlong	188
52D012	Open to all Vehicles, Yearlong	473
52D013	Open to all Vehicles, Yearlong	265
52D013A	Open to all Vehicles, Yearlong	110
52D014	Open to all Vehicles, Yearlong	458
52D014A	Open to all Vehicles, Yearlong	118
52D014B	Open to all Vehicles, Yearlong	350

INFORMATION SOURCES

Gooseneck Ranger District
 37085 Highway 97
 Macdoel, CA 96058
 530-398-4391, TDD 800-877-8339

Happy Camp and Oak Knoll Ranger Districts
 PO Box 377
 63822 Highway 96
 Happy Camp, CA 96039
 530-493-2243, TDD 800-877-8339

Salmon River and Scott River Ranger Districts
 11263 N Highway 3
 Fort Jones, CA 96032-9702
 530-468-5351, TDD 800-877-8339

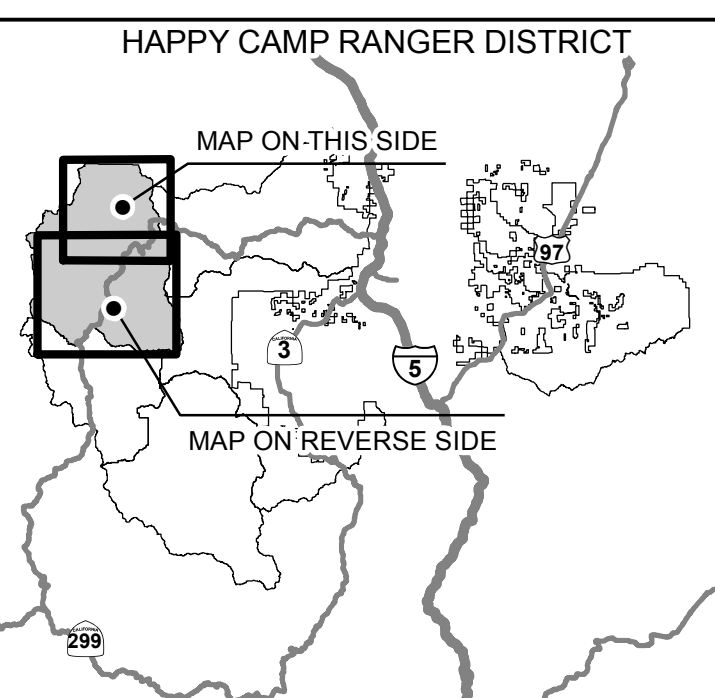
Ukonom Ranger District (Administered by Six Rivers National Forest)
 PO Box 410
 Orleans, CA 95556
 530-627-3291, TDD 800-877-8339

Klamath National Forest Supervisor's Office
 1711 S. Main St.
 Yreka, CA 96097
 530-842-6131, TDD 800-877-8339

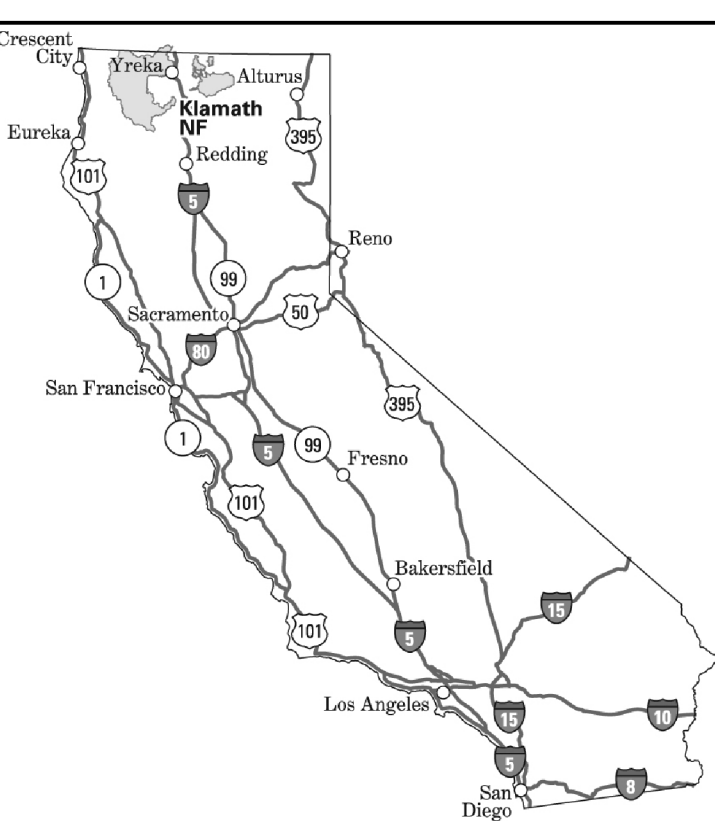
Klamath National Forest web page
www.fs.usda.gov/klamath

For emergencies please dial 911.

INDEX MAP



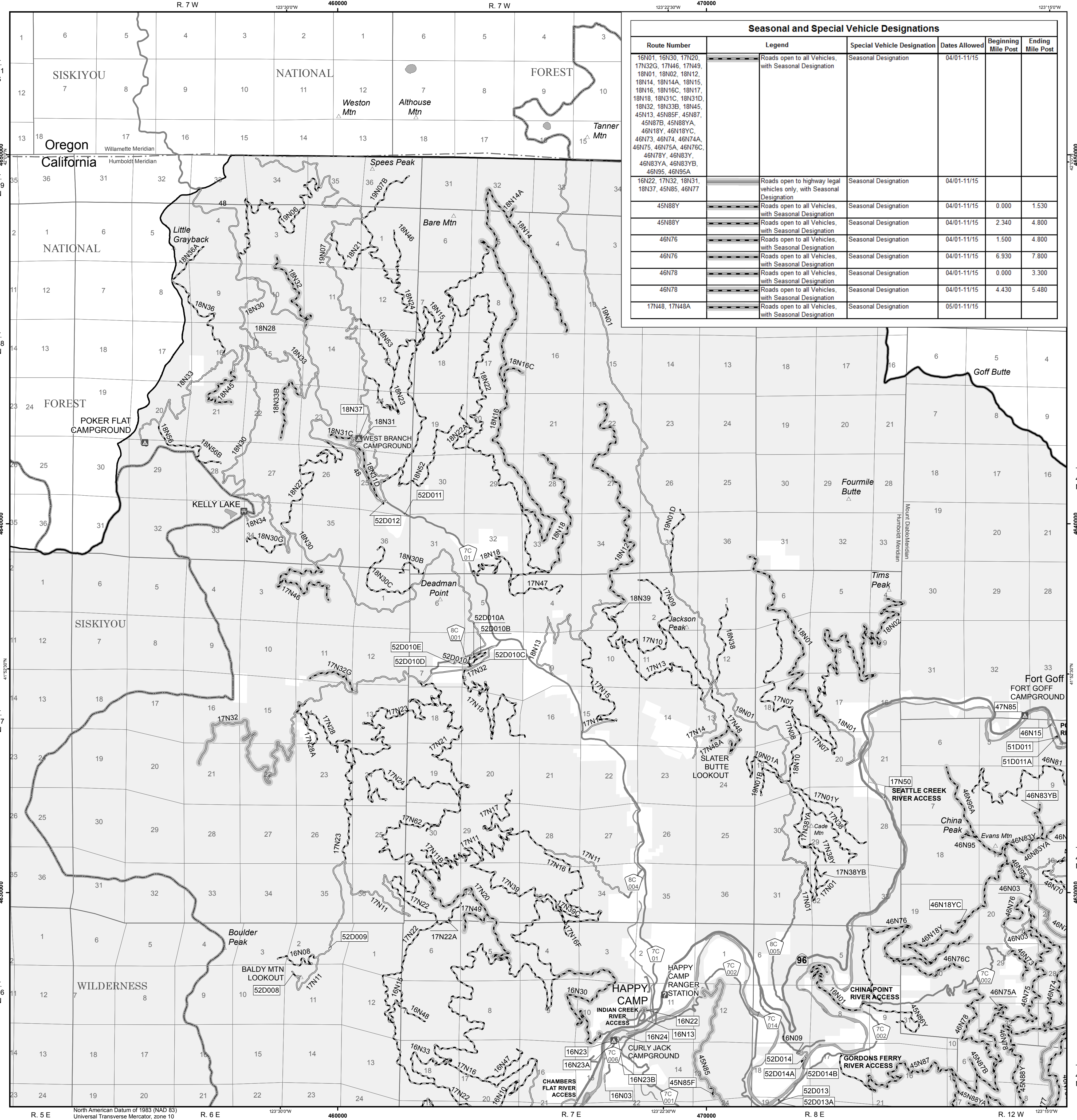
VICINITY MAP



Scan the QR code that will take you to pdf-maps.com where you can download for free the map app for both iOS and Android! Then purchase your favorite National Forest Visitor Map.

treadlightly!
 LEAVING A GOOD IMPRESSION

USDA is an equal opportunity provider, employer, and lender.



Route Number	Legend	Special Vehicle Designation	Dates Allowed	Beginning Mile Post	Ending Mile Post
16N01, 16N30, 17N20, 17N32G, 17N46, 17N49, 18N01, 18N02, 18N12, 18N14, 18N14A, 18N15, 18N16, 18N16C, 18N17, 18N18, 18N31C, 18N31D, 18N32, 18N33B, 18N45, 45N113, 45N85F, 45N87, 45N87B, 45N88YA, 46N18Y, 46N18YC, 46N73, 46N74, 46N74A, 46N75, 46N75A, 46N76C, 46N78Y, 46N83Y, 46N83YA, 46N83YB, 46N95, 46N95A	Roads open to all Vehicles, with Seasonal Designation	Seasonal Designation	04/01-11/15		
16N22, 17N32, 18N31, 18N37, 45N85, 46N77	Roads open to highway legal vehicles only, with Seasonal Designation	Seasonal Designation	04/01-11/15		
45N88Y	Roads open to all Vehicles, with Seasonal Designation	Seasonal Designation	04/01-11/15	0.000	1.530
45N88Y	Roads open to all Vehicles, with Seasonal Designation	Seasonal Designation	04/01-11/15	2.340	4.800
46N76	Roads open to all Vehicles, with Seasonal Designation	Seasonal Designation	04/01-11/15	1.500	4.800
46N76	Roads open to all Vehicles, with Seasonal Designation	Seasonal Designation	04/01-11/15	6.930	7.800
46N78	Roads open to all Vehicles, with Seasonal Designation	Seasonal Designation	04/01-11/15	0.000	3.300
46N78	Roads open to all Vehicles, with Seasonal Designation	Seasonal Designation	04/01-11/15	4.430	5.480
17N48, 17N48A	Roads open to all Vehicles, with Seasonal Designation	Seasonal Designation	05/01-11/15		