

OPERATOR RESPONSIBILITIES

Operating a motor vehicle on National Forest System roads, National Forest System trails, and in areas on National Forest System lands carries a greater responsibility than operating that vehicle in a city or other developed setting. Not only must you know and follow all applicable traffic laws, you need to show concern for the environment as well as other forest users. The misuse of motor vehicles can lead to the temporary or permanent closure of any designated road, trail, or area. As a motor vehicle operator, you are also subject to State traffic laws, including State requirements for licensing, registration, and operation of the vehicle in question.

Motor vehicle use, especially off-highway vehicle use, involves inherent risks that may cause property damage, serious injury, and possibly death to participants. Drive cautiously and anticipate rough surfaces and features, such as snow, mud, vegetation, and water crossings common to remote driving conditions. By your participation, you voluntarily assume full responsibility for these damages, risks, and dangers. Take care at all times to protect yourself and those under your responsibility.

Much of the Klamath National Forest is remote. Medical assistance may not be readily available. Cellular telephones do not work in many areas of the Klamath National Forest. Take adequate food, water, first-aid supplies, and other equipment appropriate for the conditions and expected weather.

ALWAYS REMEMBER TO RESPECT PRIVATE LAND! PROTECT YOUR PRIVILEGE. STAY ON DESIGNATED ROADS AND TRAILS AND IN DESIGNATED AREAS.

Read and understand this map in its entirety. If you have questions please contact the Klamath National Forest for clarification.

As a motor vehicle operator on a National Forest System road, trail, or area, you must comply with this map, as well as all Federal, State, and local laws and regulations. Compliance with these rules is your responsibility.

This map displays the roads, trails and areas designated open for motor vehicle use. For navigational tools refer to Forest transportation maps available at local Forest Service offices.

PROHIBITIONS
It is prohibited to possess or operate a motor vehicle on National Forest System lands on the Klamath National Forest other than in accordance with these designations (36 CFR 261.13)

Violators of 36 CFR 261.13 are subject to a fine of up to \$5,000, imprisonment for up to 6 months, or both (18 U.S.C. 3571(e)). This prohibition applies regardless of the presence or absence of signs.

This map does not display nonmotorized uses, over-snow uses, or other facilities and attractions on the Klamath National Forest. Obtain forest visitor information from the local national forest office.

Designated roads, trails, and areas may also be subject to temporary, emergency closures. As a visitor, you must comply with signs notifying you of such restrictions. A national forest may issue an order to close a road, trail, or area on a temporary basis to protect the life, health or safety of forest visitors or the natural or cultural resources in these areas. Such a temporary and/or emergency closure are consistent with the Travel Management Rule (36 CFR 212.52 (b), 36 CFR 261 subpart B).

The designation "road or trail open to all motor vehicles" does not supersede State traffic law.

EXPLANATION OF LEGEND ITEMS

Roads Open to Highway Legal Vehicles Only:

These roads are open only to motor vehicles licensed under State law for general operation on all public roads within the State.

Roads Open to All Vehicles:

These roads are open to all motor vehicles, including smaller off-highway vehicles that may not be licensed for highway use (but not to oversize or overweight vehicles under State traffic law).

Special Vehicle Designation:

This symbol indicates the road or trail is open to classes of vehicles other than those listed above. Refer to the Seasonal and Special Designation Table for further instructions.

Seasonal Designation:

This symbol, used in conjunction with one of the other road or trail symbols, indicates that the road or trail is open only during certain portions of the year. Refer to the Seasonal and Special Designation Table for further instructions.

Other Public Roads and Trails:

Other Public Roads
Highways, U.S., State

These symbols are used to show routes the Forest Service does not have jurisdiction over and has not designated for motorized use. These symbols are part of the reference layers showing connections to towns and cities outside the forest boundary.

Short Route Identifier:

[70333]

This symbol is used for routes that are too short to show an actual symbol type on the map. The symbol contains the number of the road or trail. Users should refer to the corresponding number in the Short Route Table for designation information.

PARKING STATEMENT

Motor vehicles may be parked up to 30 feet from the edge of the road surface when it is safe to do so without causing damage to NFS resources or facilities, unless prohibited by state law, a traffic sign, or an order (36 CFR 261.54).

Scan the QR code that will take you to pdf-maps.com where you can download for free the map app for both IOS and Android! Then purchase your favorite National Forest Visitor Map.



Legend

- Roads Open to Highway Legal Vehicles
- Roads Open to All Vehicles
- Special Vehicle Designation (See Seasonal Table)
- Seasonal Designation (See Seasonal Table)
- Highways, U.S. State
- County, Other Public Roads
- [70333] Short Route Identifier (see Short Route Table)
- FS Campground
- Picnic Area
- Information Site
- Peaks
- Forest Boundary
- National Forest System Lands
- Non-National Forest System Lands within the National Forest
- Wilderness Areas
- Large Lakes and Rivers

0 0.95 1.9 Miles

Road Number	Legend	Length in Feet
37N01	Open to all Vehicles, Yearlong	545
37N01A	Open to highway legal vehicles only, Yearlong	463
37N09	Open to all Vehicles, Yearlong	527
38N17F	Special Designation, Seasonal	1,220
38N18	Open to highway legal vehicles only, Seasonal	625
38N25	Open to highway legal vehicles only, Yearlong	692
54D032	Open to all Vehicles, Yearlong	174
54D033	Open to all Vehicles, Yearlong	272
54D033A	Open to all Vehicles, Yearlong	284
54D034	Open to all Vehicles, Yearlong	325
54D035	Open to all Vehicles, Yearlong	473
54D035A	Open to all Vehicles, Yearlong	170
54D035B	Open to all Vehicles, Yearlong	107
54D035C	Open to all Vehicles, Yearlong	406
54D036	Open to all Vehicles, Yearlong	129
54D037	Open to all Vehicles, Yearlong	668
54D038	Open to all Vehicles, Yearlong	456

PURPOSE AND CONTENTS OF THIS MAP

The designations shown on this motor vehicle use map (MVUM) were made by the responsible official pursuant to 36 CFR 212.51; are effective as of the date on the front cover of this MVUM; and will remain in effect until superseded by next year's MVUM.



It is the responsibility of the user to acquire the current MVUM. This map shows the National Forest System roads, National Forest System trails, and the areas on National Forest System lands in the Klamath National Forest that are designated for motor vehicle use pursuant to 36 Code of Federal Regulations (CFR) 212.51. This MVUM also identifies the vehicle classes allowed on each route and in each area; and any seasonal restrictions that apply on those routes and in those areas.

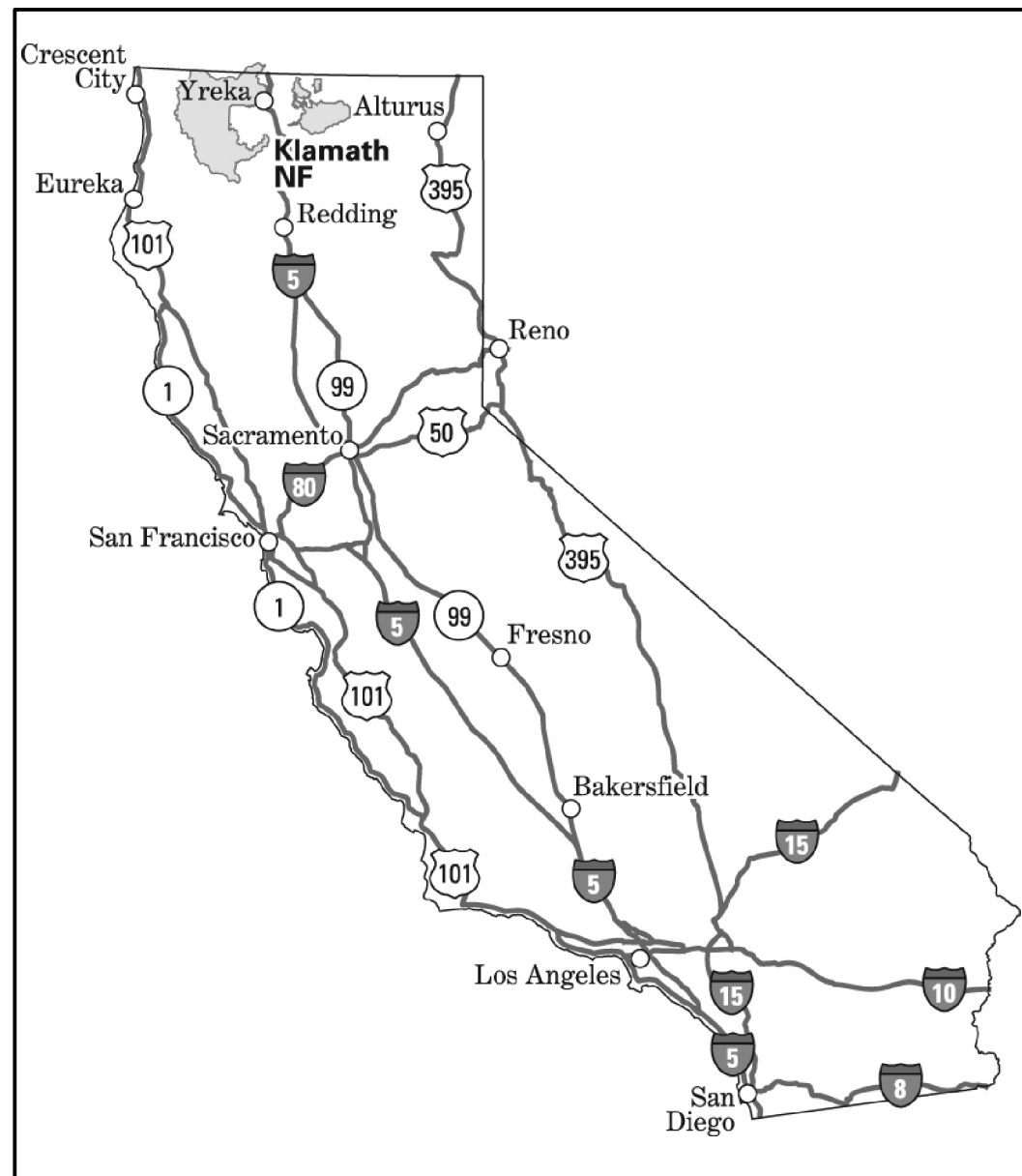
Designation of a road, trail, or area for motor vehicle use by a particular class of vehicle under 36 CFR 212.51 should not be interpreted as encouraging or inviting use or implying that the road, trail, or area is passable, actively maintained, or safe for travel. Motor vehicle designations include parking along designated routes and at facilities associated with designated routes when it is safe to do so and when not causing damage to National Forest System resources. Seasonal weather conditions and natural events may render designated roads and trails impassable for extended periods. Designated areas may contain dangerous or impassable terrain. Many designated roads and trails may be passable only by high-clearance vehicles or four-wheel-drive vehicles. Maintenance of designated roads and trails will depend on available resources, and many may receive little maintenance.

This motor vehicle use map identifies those roads, trails, and areas designated for the motor vehicle use under 36 CFR 212.51 for the purpose of enforcing the prohibition at 36 CFR 261.13. This is a limited purpose. The other public roads are shown for information and navigation purposes only and are not subject to designation under the Forest Service travel management regulation.

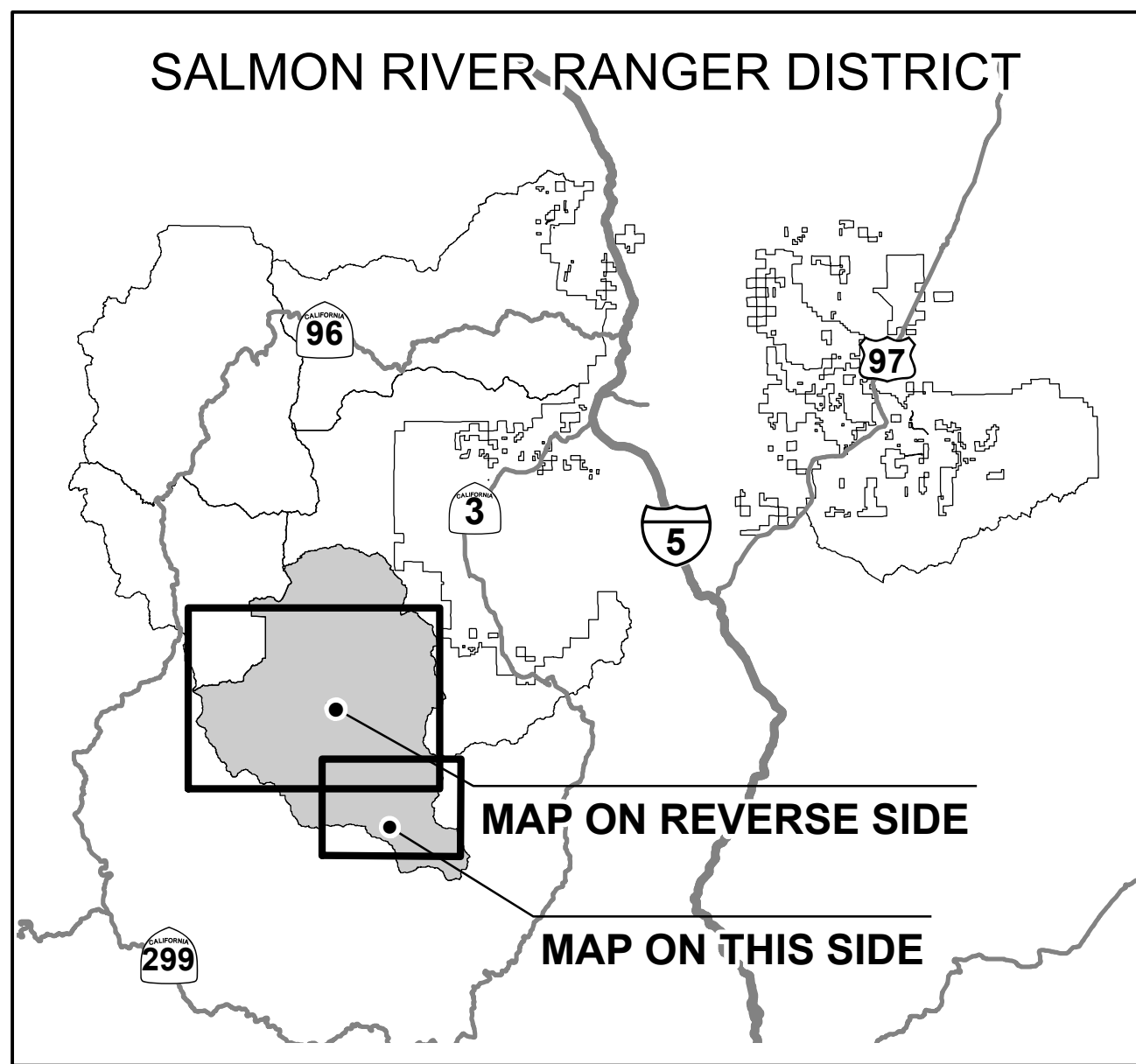
These designations apply only to National Forest System roads, National Forest System trails, and areas on National Forest System lands.

USDA is an equal opportunity provider, employer, and lender.

VICINITY MAP

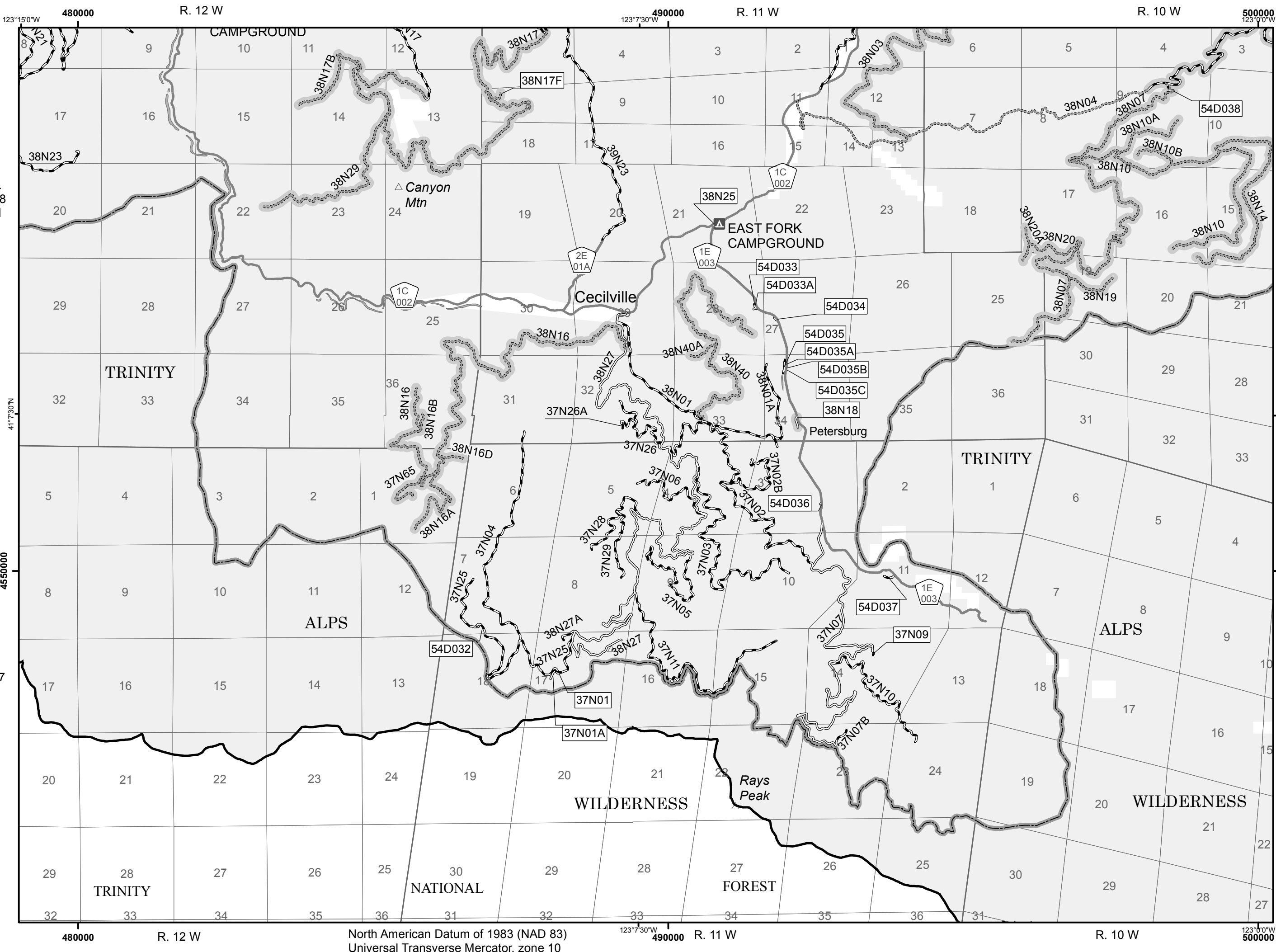


INDEX MAP



Seasonal and Special Vehicle Designations - Map on This Side

Route Number	Legend	Special Vehicle Designation	Dates Allowed	Beginning Mile Post	Ending Mile Post
38N04	Special Vehicle Designation	High Clearance Vehicles, All Non-Highway Legal Vehicles	01/01-12/31	0.000	4.740
37N65, 38N03, 38N07, 38N10, 38N10A, 38N10B, 38N14, 38N16, 38N16A, 38N16D, 38N17, 38N17B, 38N17F, 38N19, 38N20, 38N20A, 38N29, 38N40, 38N40A	Special Vehicle Designation, with Seasonal Designation	High Clearance Vehicles, All Non-Highway Legal Vehicles	04/01-11/15		
38N04	Roads open to all Vehicles, with Seasonal Designation	Seasonal Designation	04/01-11/15	4.740	7.970
38N16B	Special Vehicle Designation, with Seasonal Designation	High Clearance Vehicles	04/01-11/15	0.000	0.200
38N18	Roads open to highway legal vehicles only, with Seasonal Designation	Seasonal Designation	04/01-11/15	0.000	0.300



Short Routes - Map on Reverse Side

Road Number	Legend	Length in Feet
43N19A	Roads open to all Vehicles, Yearlong	693
43N24	Roads open to highway legal vehicles only, Yearlong	250
44N02X	Roads open to highway legal vehicles only, Yearlong	503
44N24	Roads open to all Vehicles, Yearlong	1,029
44N34YA	Roads open to all Vehicles, Yearlong	771
44N34YB	Roads open to all Vehicles, Yearlong	490
44N46	Roads open to all Vehicles, Yearlong	488
44N46A	Roads open to all Vehicles, Yearlong	498
44N46Y	Roads open to highway legal vehicles only, Yearlong	220
44N51YA	Roads open to all Vehicles, Yearlong	400
44N52	Special Designation, Yearlong	1,048
44N53B	Roads open to highway legal vehicles only, Yearlong	1,230
44N53C	Roads open to highway legal vehicles only, Yearlong	783
44N55A	Roads open to all Vehicles, Yearlong	594
44N55B	Roads open to all Vehicles, Yearlong	276
44N56Y	Roads open to all Vehicles, Seasonal	777
44N67	Roads open to all Vehicles, Yearlong	506
45N01Y	Roads open to all Vehicles, Yearlong	930
45N09X	Roads open to all Vehicles, Yearlong	225
45N17A	Roads open to all Vehicles, Yearlong	595
45N19YA	Roads open to all Vehicles, Yearlong	1,115
45N19YB	Roads open to all Vehicles, Yearlong	1,236
45N20X	Roads open to all Vehicles, Yearlong	1,227
45N20XA	Roads open to all Vehicles, Yearlong	722
45N38A	Roads open to all Vehicles, Yearlong	765
45N38A	Roads open to all Vehicles, Yearlong	585
45N60B	Roads open to all Vehicles, Yearlong	460
45N63B	Roads open to all Vehicles, Yearlong	1,081
45N66	Roads open to all Vehicles, Yearlong	541
45N87YA	Roads open to all Vehicles, Yearlong	1,127
45N89B	Roads open to all Vehicles, Yearlong	1,081
45N92	Roads open to highway legal vehicles only, Yearlong	612
45N92A	Roads open to highway legal vehicles only, Yearlong	129
45N92B	Roads open to highway legal vehicles only, Yearlong	286
45N93	Roads open to highway legal vehicles only, Seasonal	592
45N95	Roads open to highway legal vehicles only, Yearlong	737
45N96B	Roads open to all Vehicles, Yearlong	1,146
46N14	Special Designation, Yearlong	570
46N20	Roads open to highway legal vehicles only, Yearlong	69
46N24X	Roads open to highway legal vehicles only, Yearlong	1,116
46N24XA	Roads open to highway legal vehicles only, Yearlong	1,280
46N84	Roads open to highway legal vehicles only, Seasonal	459
46N84A	Roads open to highway legal vehicles only, Seasonal	459
46N84B	Roads open to highway legal vehicles only, Seasonal	197
46N84C	Roads open to highway legal vehicles only, Seasonal	391
46N84Y	Roads open to highway legal vehicles only, Seasonal	409
46N85A	Roads open to highway legal vehicles only, Seasonal	755
51D015	Roads open to all Vehicles, Yearlong	354
51D018	Roads open to all Vehicles, Yearlong	129
51D019	Roads open to all Vehicles, Yearlong	349
51D020	Roads open to all Vehicles, Yearlong	131
51D021	Roads open to all Vehicles, Yearlong	1,135
51D021A	Roads open to all Vehicles, Yearlong	80
51D021B	Roads open to all Vehicles, Yearlong	88
51D022	Roads open to all Vehicles, Yearlong	208
51D023	Roads open to all Vehicles, Yearlong	91
51D024	Roads open to all Vehicles, Yearlong	104
51D025	Roads open to all Vehicles, Yearlong	892
51D027	Roads open to all Vehicles, Yearlong	193
51D028	Roads open to all Vehicles, Yearlong	801
55D001A	Roads open to all Vehicles, Yearlong	55
55D002A	Roads open to all Vehicles, Yearlong	178
55D002B	Roads open to all Vehicles, Yearlong	630
55D002C	Roads open to all Vehicles, Yearlong	155
55D003	Roads open to all Vehicles, Yearlong	727
55D003A	Roads open to all Vehicles, Yearlong	51
55D004	Roads open to all Vehicles, Yearlong	147
55D005	Roads open to all Vehicles, Yearlong	96
55D006	Roads open to all Vehicles, Yearlong	103
55D007	Roads open to all Vehicles, Yearlong	643
55D007A	Roads open to all Vehicles, Yearlong	1,092
55D007B	Roads open to all Vehicles, Yearlong	199
55D007C	Roads open to all Vehicles, Yearlong	69
55D008	Roads open to all Vehicles, Yearlong	988
55D009	Roads open to all Vehicles, Yearlong	897
55D010	Roads open to all Vehicles, Yearlong	87
55D011	Roads open to all Vehicles, Yearlong	138
55D012	Roads open to all Vehicles, Yearlong	194
55D013	Roads open to all Vehicles, Yearlong	93
55D014	Roads open to all Vehicles, Yearlong	149

tread lightly!



Motor Vehicle Use Map Klamath National Forest Salmon River Ranger District

California 2020 Forest Service United States Department of Agriculture

INFORMATION SOURCES

- Gooseneck Ranger District
37085 Highway 97
Maddox, CA 96058
530-398-4391, TDD 800-877-8339
- Happy Camp and Oak Knoll Ranger Districts
PO Box 377
63822 Highway 96
Happy Camp, CA 96039
530-493-2243, TDD 800-877-8339
- Salmon River and Scott River Ranger Districts
11263 N Highway 3
Fort Jones, CA 96032-9702
530-468-5351, TDD 800-877-8339
- Ukonom Ranger District (Administered by Six Rivers National Forest)
PO Box 410
Orleans, CA 95556
530-627-3291, TDD 800-877-8339
- Klamath National Forest Supervisor's Office
1711 S. Main St.
Yreka, CA 96097
530-842-6131, TDD 800-877-8339
- Klamath National Forest web page
www.fs.usda.gov/klamath
- For emergencies please dial 911.