

**EXPLANATION OF LEGEND ITEMS**

**Roads Open to Highway Legal Vehicles Only:**  
 These roads are open only to motor vehicles licensed under State law for general operation on all public roads within the State.  
**Roads Open to All Vehicles:**  
 These roads are open to all motor vehicles, including smaller off-highway vehicles that may not be licensed for highway use (but not to oversized or overweight vehicles under State traffic law).  
**Trails Open to All Vehicles:**  
 These trails are open to all motor vehicles, including both highway legal and nonhighway legal vehicles.  
**Trails Open to Vehicles 50" or Less in Width:**  
 These trails are open only to motor vehicles less than 50 inches in width at the widest point on the vehicle.  
**Seasonal Designation:**  
 This symbol, used in conjunction with one of the other road or trail symbols, indicates that the road or trail is open only during certain portions of the year. Refer to the Seasonal and Special Designation Table for further instructions.

**Other Public Roads and Trails:**  
 Interstate  
 Highways, U.S., State  
 Other Public Roads  
 Other Public Trails

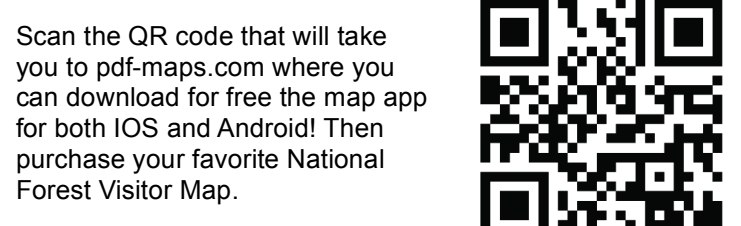
These symbols are used to show routes the Forest Service does not have jurisdiction over and has not designated for motorized use. These symbols are part of the reference layers showing connections to towns and cities outside the forest boundary.

**Short Route Identifier:**  
 70333

This symbol is used for routes that are too short to show an actual symbol type on the map. The symbol contains the number of the road or trail. Users should refer to the corresponding number in the Short Route Table for designation information.

**Areas Open to Cross Country Travel:**

These areas are on National Forest System land that allow cross-country travel by motorized vehicles. Specific vehicle classes and seasonal designations may be indicated in the Seasonal and Special Designation Table.



Scan the QR code that will take you to pdf-maps.com where you can download for free the map app for both iOS and Android! Then purchase your favorite National Forest Visitor Map.

# Motor Vehicle Use Map

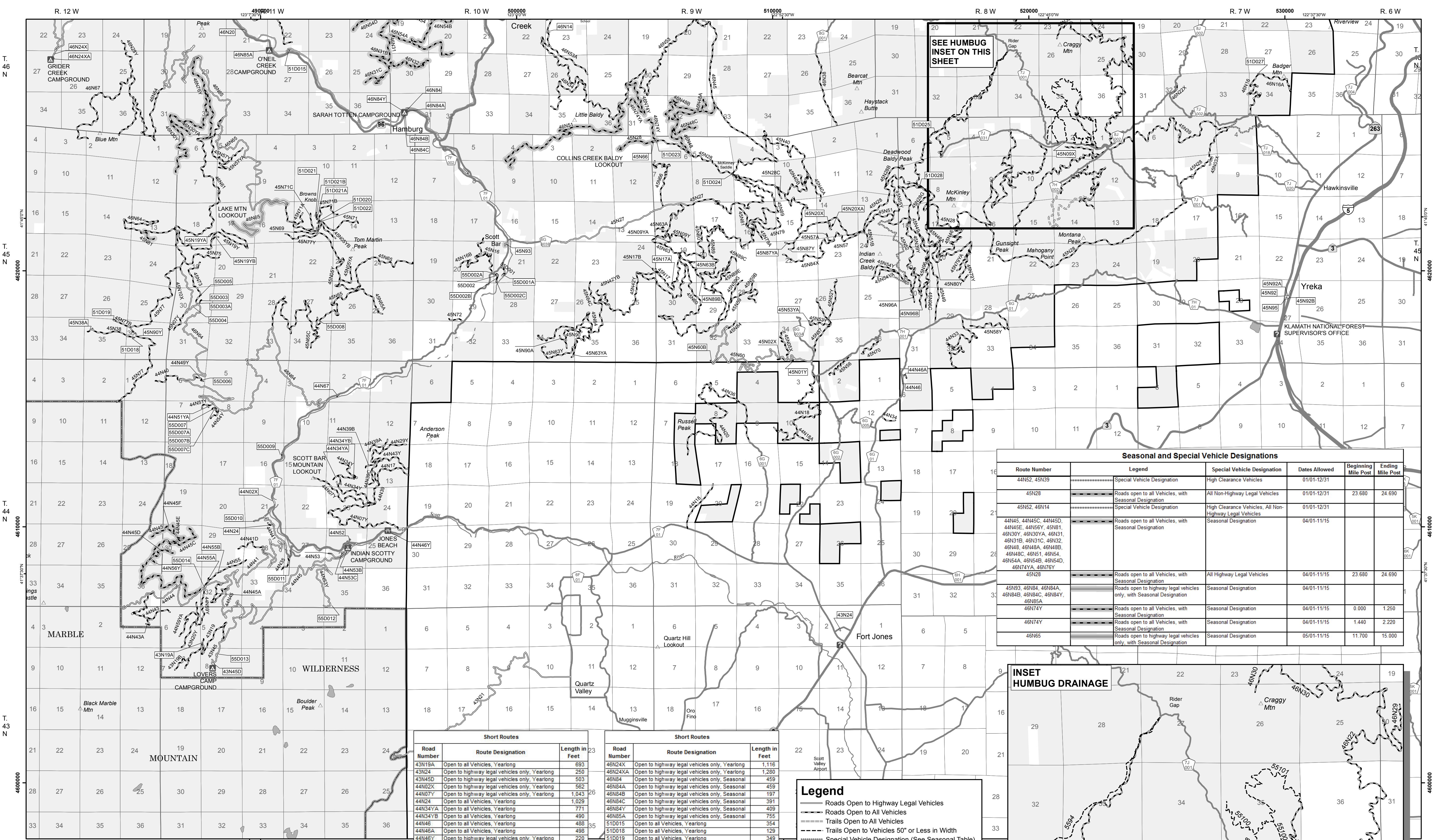
## Klamath National Forest

### Scott River Ranger District

California 2020  
 Forest Service  
 United States Department of Agriculture

**INFORMATION SOURCES**

- Gooseneck Ranger District  
37085 Highway 97  
Maddoel, CA 96058  
530-398-4391, TDD 800-877-8339
- Happy Camp and Oak Knoll Ranger Districts  
PO Box 377  
63822 Highway 96  
Happy Camp, CA 96039  
530-493-2243, TDD 800-877-8339
- Salmon River and Scott River Ranger Districts  
11263 N Highway 3  
Fort Jones, CA 96032-9702  
530-468-5351, TDD 800-877-8339
- Ukonom Ranger District (Administered by Six Rivers National Forest)  
PO Box 410  
Orleans, CA 95556  
530-627-3291, TDD 800-877-8339
- Klamath National Forest Supervisor's Office  
1711 S. Main St.  
Yreka, CA 96097  
530-842-6131, TDD 800-877-8339
- Klamath National Forest web page  
www.fs.usda.gov/klamath
- For emergencies please dial 911.

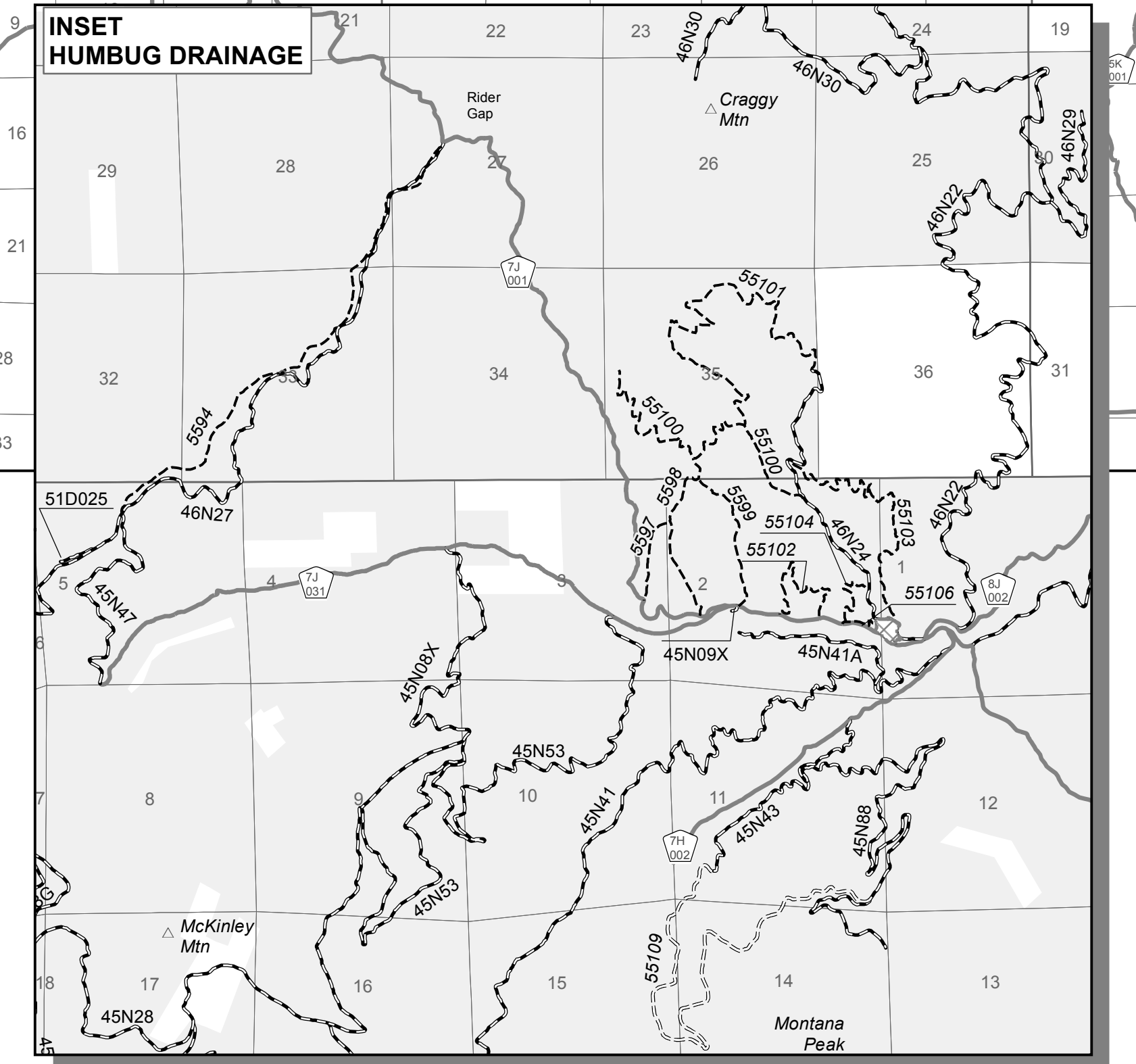
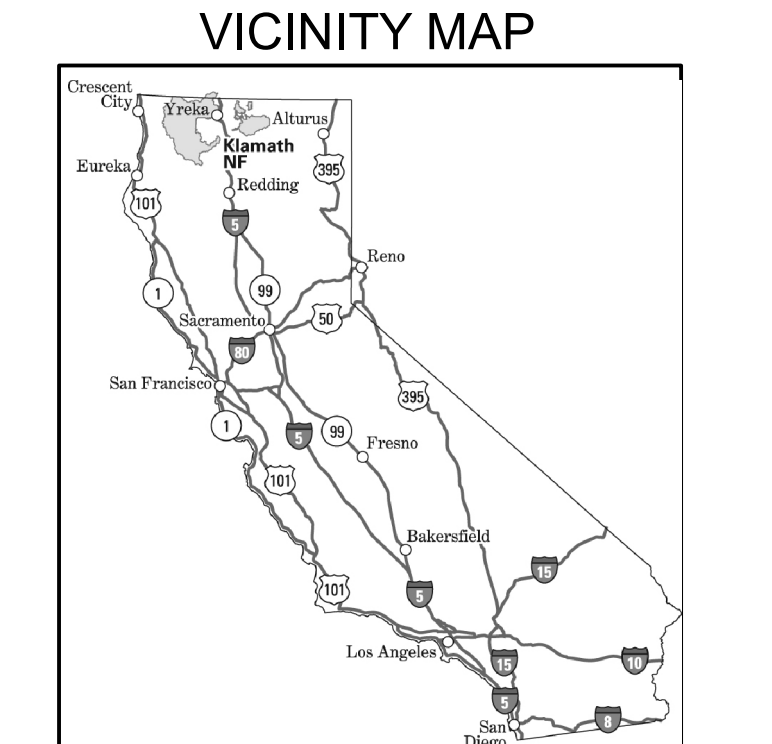
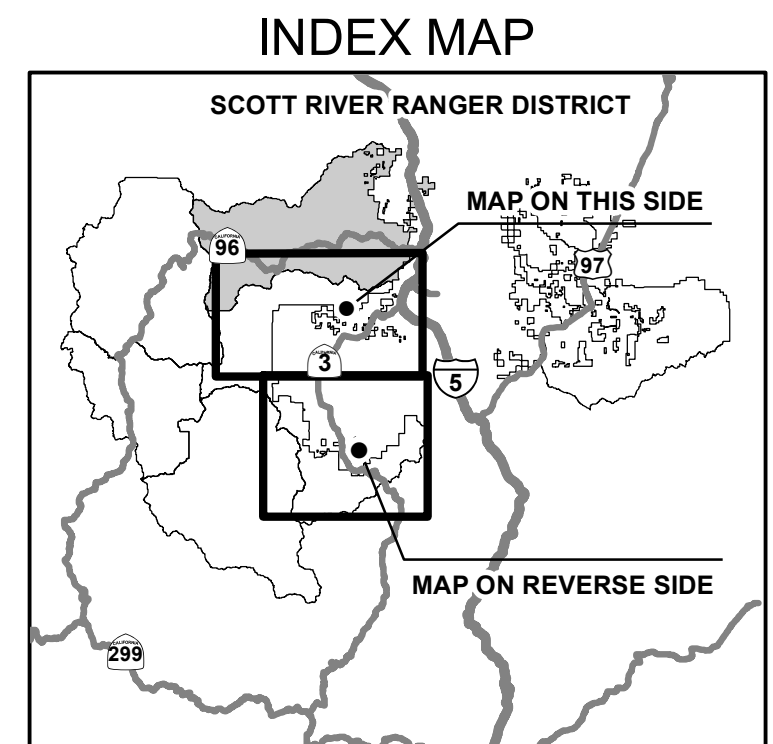


**SEE HUMBUG INSET ON THIS SHEET**

Route Number	Legend	Special Vehicle Designation	Dates Allowed	Beginning Mile Post	Ending Mile Post
44N52, 45L39	Special Vehicle Designation	High Clearance Vehicles	01/01-12/31		
45N28	Roads open to all Vehicles, with Seasonal Designation	All Non-Highway Legal Vehicles	01/01-12/31	23.680	24.690
45N52, 46N14	Special Vehicle Designation	High Clearance Vehicles, All Non-Highway Legal Vehicles	01/01-12/31		
44N45, 44N45C, 44N45D, 44N45E, 44N45F, 46N11, 46N30Y, 46N30YA, 46N31, 46N31B, 46N31C, 46N32, 46N48, 46N48A, 46N48B, 46N48C, 46N48D, 46N48E, 46N48F, 46N48G, 46N48H, 46N48I, 46N48J, 46N48K, 46N48L, 46N48M, 46N48N, 46N48O, 46N48P, 46N48Q, 46N48R, 46N48S, 46N48T, 46N48U, 46N48V, 46N48W, 46N48X, 46N48Y, 46N48Z	Roads open to all Vehicles, with Seasonal Designation	All Highway Legal Vehicles	04/01-11/15	23.680	24.690
45N93, 46N84, 46N84A, 46N84B, 46N84C, 46N84D, 46N84E, 46N84F, 46N84G, 46N84H, 46N84I, 46N84J, 46N84K, 46N84L, 46N84M, 46N84N, 46N84O, 46N84P, 46N84Q, 46N84R, 46N84S, 46N84T, 46N84U, 46N84V, 46N84W, 46N84X, 46N84Y, 46N84Z	Roads open to all Vehicles, with Seasonal Designation	Seasonal Designation	04/01-11/15		
46N74Y	Roads open to all Vehicles, with Seasonal Designation	Seasonal Designation	04/01-11/15	0.000	1.250
46N74Y	Roads open to all Vehicles, with Seasonal Designation	Seasonal Designation	04/01-11/15	1.440	2.220
46N65	Roads open to highway legal vehicles only, with Seasonal Designation	Seasonal Designation	05/01-11/15	11.700	15.000

Road Number	Route Designation	Length in Feet
43N15A	Open to all Vehicles, Yearlong	693
43N24	Open to highway legal vehicles only, Yearlong	250
43N45D	Open to highway legal vehicles only, Yearlong	503
44N02X	Open to highway legal vehicles only, Yearlong	562
44N07Y	Open to highway legal vehicles only, Yearlong	1,043
44N24	Open to all Vehicles, Yearlong	1,029
44N34YA	Open to all Vehicles, Yearlong	771
44N34YB	Open to all Vehicles, Yearlong	490
44N46	Open to all Vehicles, Yearlong	488
44N46A	Open to all Vehicles, Yearlong	488
44N46Y	Open to highway legal vehicles only, Yearlong	220
44N51YA	Open to all Vehicles, Yearlong	400
44N52	Special Designation, Yearlong	1,048
44N53B	Open to highway legal vehicles only, Yearlong	1,230
44N53C	Open to highway legal vehicles only, Yearlong	783
44N55A	Open to all Vehicles, Yearlong	594
44N55B	Open to all Vehicles, Yearlong	276
44N56Y	Open to all Vehicles, Seasonal	777
44N67	Open to all Vehicles, Yearlong	508
45N01Y	Open to all Vehicles, Yearlong	930
45N09X	Open to all Vehicles, Yearlong	225
45N17A	Open to all Vehicles, Yearlong	596
45N19YA	Open to all Vehicles, Yearlong	1,115
45N19YB	Open to all Vehicles, Yearlong	1,236
45N20X	Open to all Vehicles, Yearlong	1,227
45N20YA	Open to all Vehicles, Yearlong	722
45N20YB	Open to all Vehicles, Yearlong	755
45N32A	Open to all Vehicles, Yearlong	785
45N33YA	Open to all Vehicles, Yearlong	585
45N50B	Open to all Vehicles, Yearlong	460
45N53B	Open to all Vehicles, Yearlong	1,081
45N56	Open to all Vehicles, Yearlong	541
45N57YA	Open to all Vehicles, Yearlong	1,127
45N59B	Open to all Vehicles, Yearlong	1,381
45N52	Open to highway legal vehicles only, Yearlong	1,184
45N92A	Open to highway legal vehicles only, Yearlong	129
45N92B	Open to highway legal vehicles only, Yearlong	286
45N93	Open to highway legal vehicles only, Seasonal	592
45N95	Open to highway legal vehicles only, Yearlong	737
45N95B	Open to all Vehicles, Yearlong	1,148
46N114	Special Designation, Yearlong	570
46N20	Open to highway legal vehicles only, Yearlong	361

Road Number	Route Designation	Length in Feet
46N24X	Open to highway legal vehicles only, Yearlong	1,116
46N24YA	Open to highway legal vehicles only, Yearlong	1,280
46N84	Open to highway legal vehicles only, Seasonal	459
46N84A	Open to highway legal vehicles only, Seasonal	459
46N84B	Open to highway legal vehicles only, Seasonal	197
46N84C	Open to highway legal vehicles only, Seasonal	391
46N84Y	Open to highway legal vehicles only, Seasonal	469
46N85A	Open to highway legal vehicles only, Seasonal	755
51D015	Open to all Vehicles, Yearlong	354
51D018	Open to all Vehicles, Yearlong	129
51D019	Open to all Vehicles, Yearlong	349
51D020	Open to all Vehicles, Yearlong	131
51D021	Open to all Vehicles, Yearlong	1,135
51D021A	Open to all Vehicles, Yearlong	89
51D021B	Open to all Vehicles, Yearlong	88
51D022	Open to all Vehicles, Yearlong	208
51D023	Open to all Vehicles, Yearlong	91
51D024	Open to all Vehicles, Yearlong	104
51D025	Open to all Vehicles, Yearlong	892
51D027	Open to all Vehicles, Yearlong	183
51D028	Open to all Vehicles, Yearlong	801
55D001A	Open to all Vehicles, Yearlong	55
55D002A	Open to all Vehicles, Yearlong	178
55D002B	Open to all Vehicles, Yearlong	630
55D002C	Open to all Vehicles, Yearlong	155
55D003	Open to all Vehicles, Yearlong	727
55D003A	Open to all Vehicles, Yearlong	51
55D004	Open to all Vehicles, Yearlong	147
55D005	Open to all Vehicles, Yearlong	96
55D006	Open to all Vehicles, Yearlong	103
55D007	Open to all Vehicles, Yearlong	643
55D007A	Open to all Vehicles, Yearlong	1,062
55D007B	Open to all Vehicles, Yearlong	189
55D007C	Open to all Vehicles, Yearlong	69
55D008	Open to all Vehicles, Yearlong	988
55D009	Open to all Vehicles, Yearlong	897
55D010	Open to all Vehicles, Yearlong	67
55D011	Open to all Vehicles, Yearlong	138
55D012	Open to all Vehicles, Yearlong	194
55D013	Open to all Vehicles, Yearlong	93
55D014	Open to all Vehicles, Yearlong	149



**Legend**

- Roads Open to Highway Legal Vehicles
- Roads Open to All Vehicles
- Trails Open to All Vehicles
- Trails Open to Vehicles 50" or Less in Width
- Special Vehicle Designation (See Seasonal Table)
- Seasonal Designation (See Seasonal Table)
- Interstate
- Highways, U.S., State
- County Roads, Other Public Roads
- 70333 Short Route Identifier (see Short Route Table)
- Areas Open to Cross-Country Travel
- FS Campground
- Picnic Area
- Information Site
- Peaks
- Forest Boundary
- National Forest System Lands
- Non-National Forest System Lands within the National Forest
- Wilderness Areas
- Large Lakes and Rivers

0 1 2 Miles