

OPERATOR RESPONSIBILITIES

Operating a motor vehicle on National Forest System roads, National Forest System trails, and in areas on National Forest System lands carries a greater responsibility than operating that vehicle in a city or other developed setting. Not only must you know and follow all applicable traffic laws, you need to show concern for the environment as well as other forest users. The misuse of motor vehicles can lead to the temporary or permanent closure of any designated road, trail, or area. As a motor vehicle operator, you are also subject to State traffic laws, including State requirements for licensing, registration, and operation of the vehicle in question.

Motor vehicle use, especially off-highway vehicle use, involves inherent risks that may cause property damage, serious injury, and possibly death to participants. Drive cautiously and anticipate rough surfaces and features, such as snow, mud, vegetation, and water crossings common to remote driving conditions. By your participation, you voluntarily assume full responsibility for these damages, risks, and dangers. Take care at all times to protect yourself and those under your responsibility.

Much of the Klamath National Forest is remote. Medical assistance may not be readily available. Cellular telephones do not work in many areas of the Klamath National Forest. Take adequate food, water, first-aid supplies, and other equipment appropriate for the conditions and expected weather.

ALWAYS REMEMBER TO RESPECT PRIVATE LAND! PROTECT YOUR PRIVILEGE. STAY ON DESIGNATED ROADS AND TRAILS AND IN DESIGNATED AREAS.

Read and understand this map in its entirety. If you have questions please contact the Klamath National Forest for clarification.

As a motor vehicle operator on a National Forest System road, trail, or area, you must comply with this map, as well as all Federal, State, and local laws and regulations. Compliance with these rules is your responsibility. This map displays the roads, trails and areas designated open for motor vehicle use. For navigational tools refer to Forest transportation maps available at local Forest Service offices.

PROHIBITIONS

It is prohibited to possess or operate a motor vehicle on National Forest System lands on the Klamath National Forest other than in accordance with these designations (36 CFR 261.13).

Violators of 36 CFR 261.13 are subject to a fine of up to \$5,000, imprisonment for up to 6 months, or both (18 U.S.C. 3571(e)). This prohibition applies regardless of the presence or absence of signs.

This map does not display nonmotorized uses, over-snow uses, or other facilities and attractions on the Klamath National Forest. Obtain forest visitor information from the local national forest office.

Designated roads, trails, and areas may also be subject to temporary, emergency closures. As a visitor, you must comply with signs notifying you of such restrictions. A national forest may issue an order to close a road, trail, or area on a temporary basis to protect the life, health or safety of forest visitors or the natural or cultural resources in these areas. Such a temporary and/or emergency closures are consistent with the Travel Management Rule (36 CFR 212.52 (b), 36 CFR 261 subpart B).

The designation "road or trail open to all motor vehicles" does not supersede State traffic law.

Motor Vehicle Use Map

Klamath National Forest

Scott River Ranger District

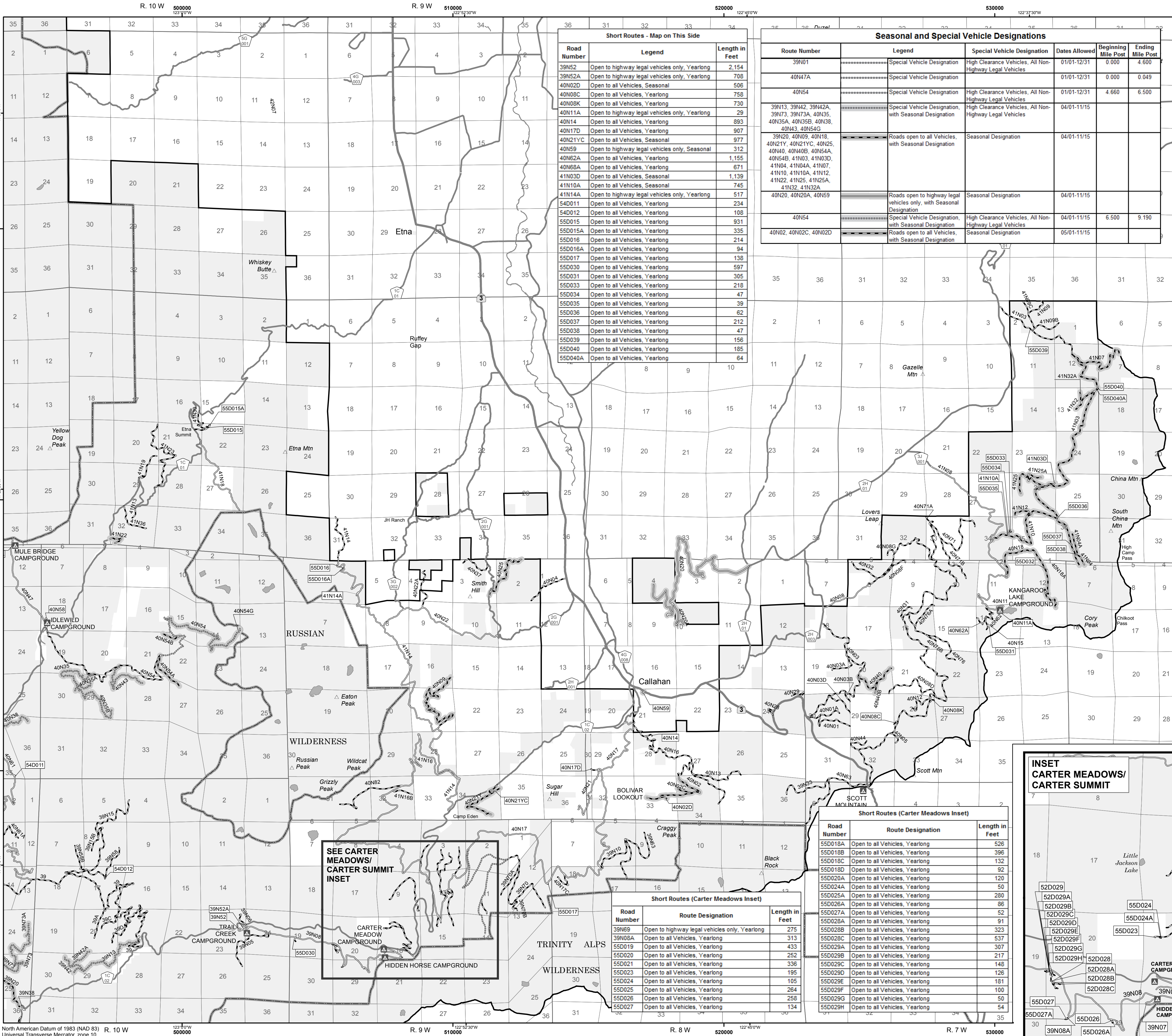
California 2020



United States Department of Agriculture

Legend

- Roads Open to Highway Legal Vehicles
- Roads Open to All Vehicles
- Trails Open to All Vehicles
- Trails Open to Vehicles 50" or Less in Width
- Special Vehicle Designation (See Seasonal Table)
- Seasonal Designation (See Seasonal Table)
- Highways, US, State
- Other Public Roads
- 70333 Short Route Identifier (see Short Route Table)
- ▨ Areas Open to Cross-Country Travel
- ▲ FS Campground
- ▲ Picnic Area
- ▲ Information Site
- ▲ Peaks
- ▭ Forest Boundary
- ▭ National Forest System Lands
- ▭ Non-National Forest System Lands within the National Forest
- ▭ Wilderness Areas
- ▭ Large Lakes and Rivers



Short Routes - Map on This Side

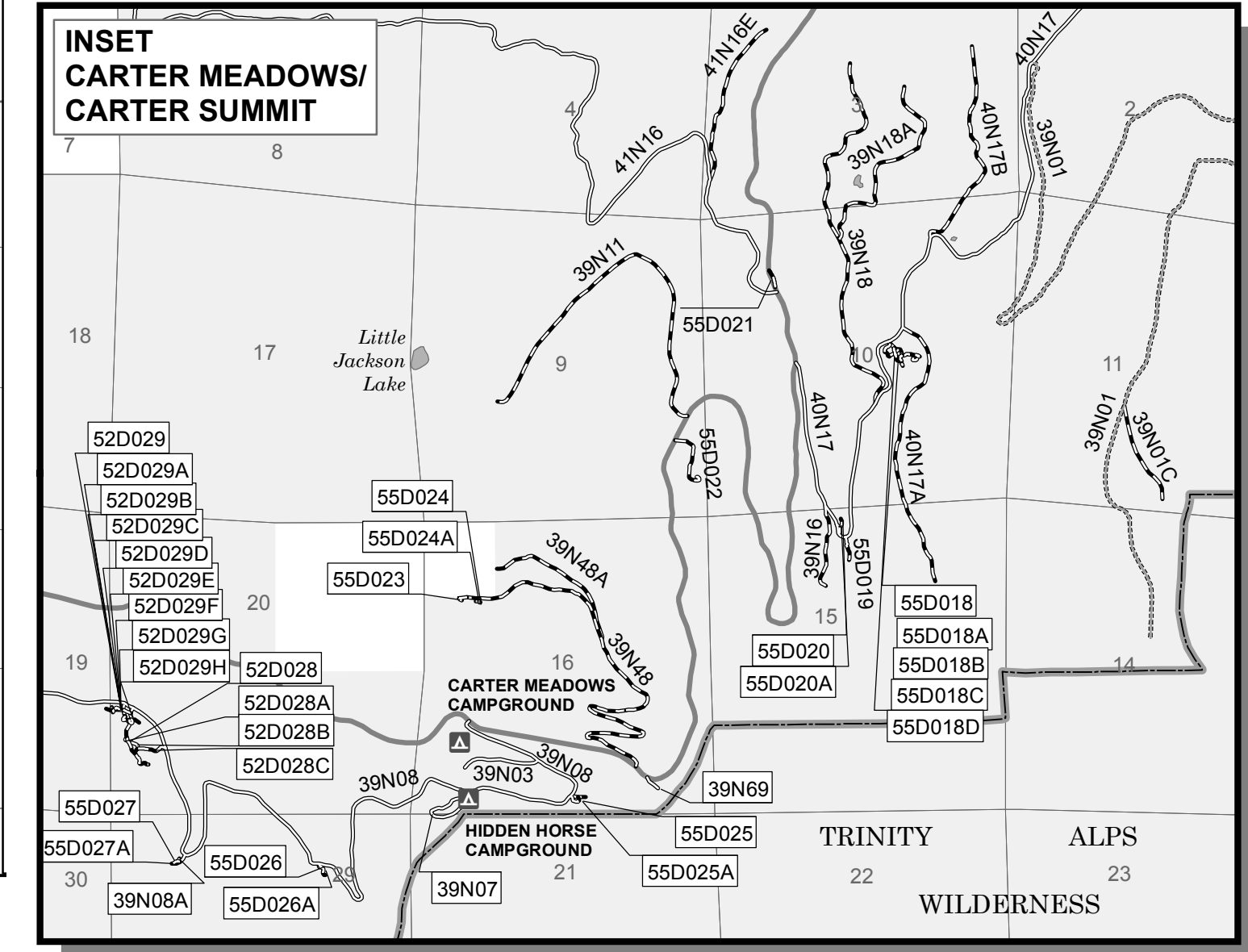
Road Number	Legend	Length in Feet
39N52	Open to highway legal vehicles only, Yearlong	2,154
39N52A	Open to highway legal vehicles only, Yearlong	708
40N02D	Open to all Vehicles, Seasonal	506
40N08C	Open to all Vehicles, Yearlong	758
40N08K	Open to all Vehicles, Yearlong	730
40N11A	Open to highway legal vehicles only, Yearlong	29
40N14	Open to all Vehicles, Yearlong	893
40N17D	Open to all Vehicles, Yearlong	907
40N21YC	Open to all Vehicles, Seasonal	977
40N59	Open to highway legal vehicles only, Seasonal	312
40N62A	Open to all Vehicles, Yearlong	1,155
40N68A	Open to all Vehicles, Yearlong	671
41N03D	Open to all Vehicles, Seasonal	1,139
41N10A	Open to all Vehicles, Seasonal	745
41N14A	Open to highway legal vehicles only, Yearlong	517
54D011	Open to all Vehicles, Yearlong	234
54D012	Open to all Vehicles, Yearlong	108
55D015	Open to all Vehicles, Yearlong	931
55D015A	Open to all Vehicles, Yearlong	335
55D016	Open to all Vehicles, Yearlong	214
55D016A	Open to all Vehicles, Yearlong	94
55D017	Open to all Vehicles, Yearlong	138
55D030	Open to all Vehicles, Yearlong	597
55D031	Open to all Vehicles, Yearlong	305
55D033	Open to all Vehicles, Yearlong	218
55D034	Open to all Vehicles, Yearlong	47
55D035	Open to all Vehicles, Yearlong	39
55D036	Open to all Vehicles, Yearlong	62
55D037	Open to all Vehicles, Yearlong	212
55D038	Open to all Vehicles, Yearlong	47
55D039	Open to all Vehicles, Yearlong	156
55D040	Open to all Vehicles, Yearlong	185
55D040A	Open to all Vehicles, Yearlong	64

Seasonal and Special Vehicle Designations

Route Number	Legend	Special Vehicle Designation	Dates Allowed	Beginning Mile Post	Ending Mile Post
39N01	Special Vehicle Designation	High Clearance Vehicles, All Non-Highway Legal Vehicles	01/01-12/31	0.000	4.600
40N47A	Special Vehicle Designation		01/01-12/31	0.000	0.049
40N54	Special Vehicle Designation	High Clearance Vehicles, All Non-Highway Legal Vehicles	01/01-12/31	4.660	6.500
39N13, 39N42, 39N42A, 39N73, 39N73A, 40N35, 40N35A, 40N35B, 40N38, 40N43, 40N54G	Special Vehicle Designation, with Seasonal Designation	High Clearance Vehicles, All Non-Highway Legal Vehicles	04/01-11/15		
39N20, 40N09, 40N18, 40N21Y, 40N21YC, 40N25, 40N40, 40N40B, 40N54A, 40N54B, 41N03, 41N03D, 41N04, 41N04A, 41N07, 41N10, 41N10A, 41N12, 41N22, 41N25, 41N25A, 41N32, 41N32A	Roads open to all Vehicles, with Seasonal Designation	Seasonal Designation	04/01-11/15		
40N20, 40N20A, 40N59	Roads open to highway legal vehicles only, with Seasonal Designation	Seasonal Designation	04/01-11/15		
40N54	Special Vehicle Designation, with Seasonal Designation	High Clearance Vehicles, All Non-Highway Legal Vehicles	04/01-11/15	6.500	9.190
40N02, 40N02C, 40N02D	Roads open to all Vehicles, with Seasonal Designation	Seasonal Designation	05/01-11/15		

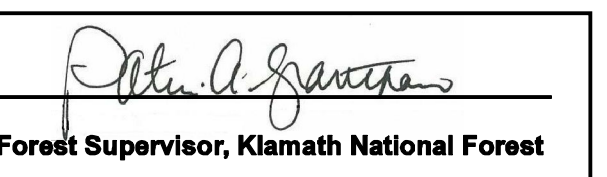
Short Routes (Carter Meadows Inset)

Road Number	Route Designation	Length in Feet
55D018A	Open to all Vehicles, Yearlong	526
55D018B	Open to all Vehicles, Yearlong	396
55D018C	Open to all Vehicles, Yearlong	132
55D018D	Open to all Vehicles, Yearlong	92
55D020A	Open to all Vehicles, Yearlong	120
55D024A	Open to all Vehicles, Yearlong	50
55D025A	Open to all Vehicles, Yearlong	280
55D026A	Open to all Vehicles, Yearlong	86
55D027A	Open to all Vehicles, Yearlong	52
55D028A	Open to all Vehicles, Yearlong	91
55D028B	Open to all Vehicles, Yearlong	323
55D028C	Open to all Vehicles, Yearlong	537
55D029A	Open to all Vehicles, Yearlong	307
55D029B	Open to all Vehicles, Yearlong	217
55D029C	Open to all Vehicles, Yearlong	148
55D029D	Open to all Vehicles, Yearlong	126
55D029E	Open to all Vehicles, Yearlong	181
55D029F	Open to all Vehicles, Yearlong	100
55D029G	Open to all Vehicles, Yearlong	50
55D029H	Open to all Vehicles, Yearlong	54



PURPOSE AND CONTENTS OF THIS MAP

The designations shown on this motor vehicle use map (MVUM) were made by the responsible official pursuant to 36 CFR 212.51; are effective as of the date on the front cover of this MVUM; and will remain in effect until superseded by next year's MVUM.



It is the responsibility of the user to acquire the current MVUM. This map shows the National Forest System roads, National Forest System trails, and the areas on National Forest System lands in the Klamath National Forest that are designated for motor vehicle use pursuant to 36 Code of Federal Regulations (CFR) 212.51. This MVUM also identifies the vehicle classes allowed on each route and in each area; and any seasonal restrictions that apply on those routes and in those areas.

Designation of a road, trail, or area for motor vehicle use by a particular class of vehicle under 36 CFR 212.51 should not be interpreted as encouraging or inviting use or implying that the road, trail, or area is passably actively maintained, or safe for travel. Motor vehicle designations include parking along designated routes and at facilities associated with designated routes when it is safe to do so and when not causing damage to National Forest System resources. Seasonal weather conditions and natural events may render designated roads and trails impassable for extended periods. Designated areas may contain dangerous or impassable terrain. Many designated roads and trails may be passable only by high-clearance vehicles or four-wheel-drive vehicles. Maintenance of designated roads and trails will depend on available resources, and many may receive little maintenance.

This motor vehicle use map identifies those roads, trails, and areas designated for the motor vehicle use under 36 CFR 212.51 for the purpose of enforcing the prohibition at 36 CFR 261.13. This is a limited purpose. The other public roads are shown for information and navigation purposes only and are not subject to designation under the Forest Service travel management regulation.

These designations apply only to National Forest System roads, National Forest System trails, and areas on National Forest System lands.

PARKING STATEMENT

Motor vehicles may be parked up to 30 feet from the edge of the road surface when it is safe to do so without causing damage to NFS resources or facilities, unless prohibited by state law, a traffic sign, or an order (36 CFR 261.54).

AREAS OPEN TO CROSS COUNTRY TRAVEL

The "Humburg Open Riding Area" and "Juniper Flat Open Riding Area" Travel Management Areas are open to vehicles 50 inches or less in width year-round.

The U.S. Department of Agriculture (USDA) prohibits discrimination in all its programs and activities on the basis of race, color, national origin, age, disability, and where applicable, sex, marital status, familial status, parental status, religion, sexual orientation, genetic information, political beliefs, reprisal, or because all or part of an individual's income is derived from any public assistance program. (Not all prohibited bases apply to all programs.) Persons with disabilities who require alternative means for communication of program information (Braille, large print, audiotape, etc.) should contact USDA's TARGET Center at (202) 720-2600 (voice and TDD). To file a complaint of discrimination, write to USDA, Director, Office of Civil Rights, 1400 Independence Avenue, S.W., Washington, D.C. 20250-9410, or call (800) 795-3272 (voice) or (202) 720-6382 (TDD). USDA is an equal opportunity provider and employer.