

Motor Vehicle Use Map

Lassen National Forest

California 2011
 Forest Service
 United States Department of Agriculture

EXPLANATION OF LEGEND ITEMS

Roads Open to Highway Legal Vehicles Only:
 These roads are open only to motor vehicles licensed under State law for general operation on all public roads within the State.

Roads Open to All Vehicles:
 These roads are open to all motor vehicles, including smaller off-highway vehicles that may not be licensed for highway use (but not to oversize or overweight vehicles under State traffic law).

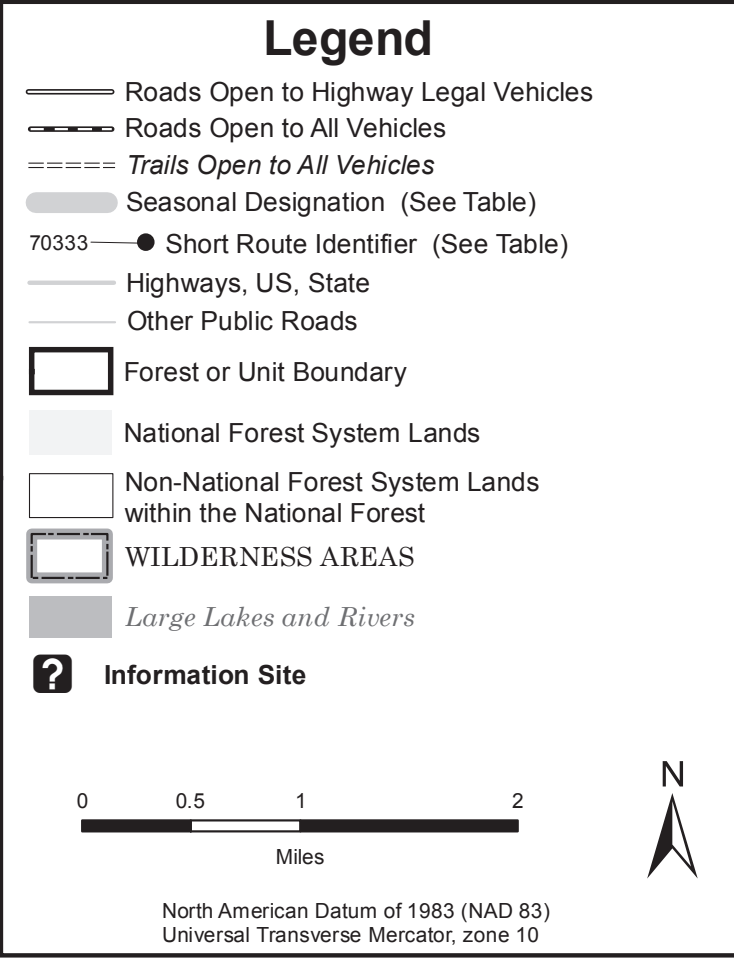
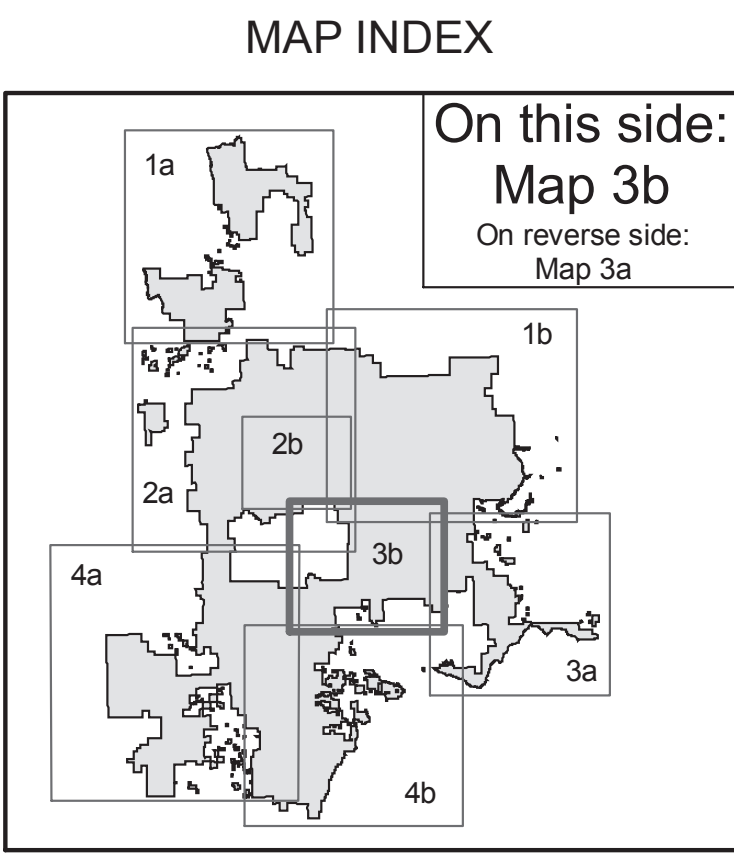
Trails Open to All Vehicles:
 These trails are open to all motor vehicles, including both highway legal and nonhighway legal vehicles.

Seasonal Designation:
 This symbol, used in conjunction with one of the other road or trail symbols, indicates that the road or trail is open only during certain portions of the year. Refer to the Seasonal and Special Designation Table for further instructions.

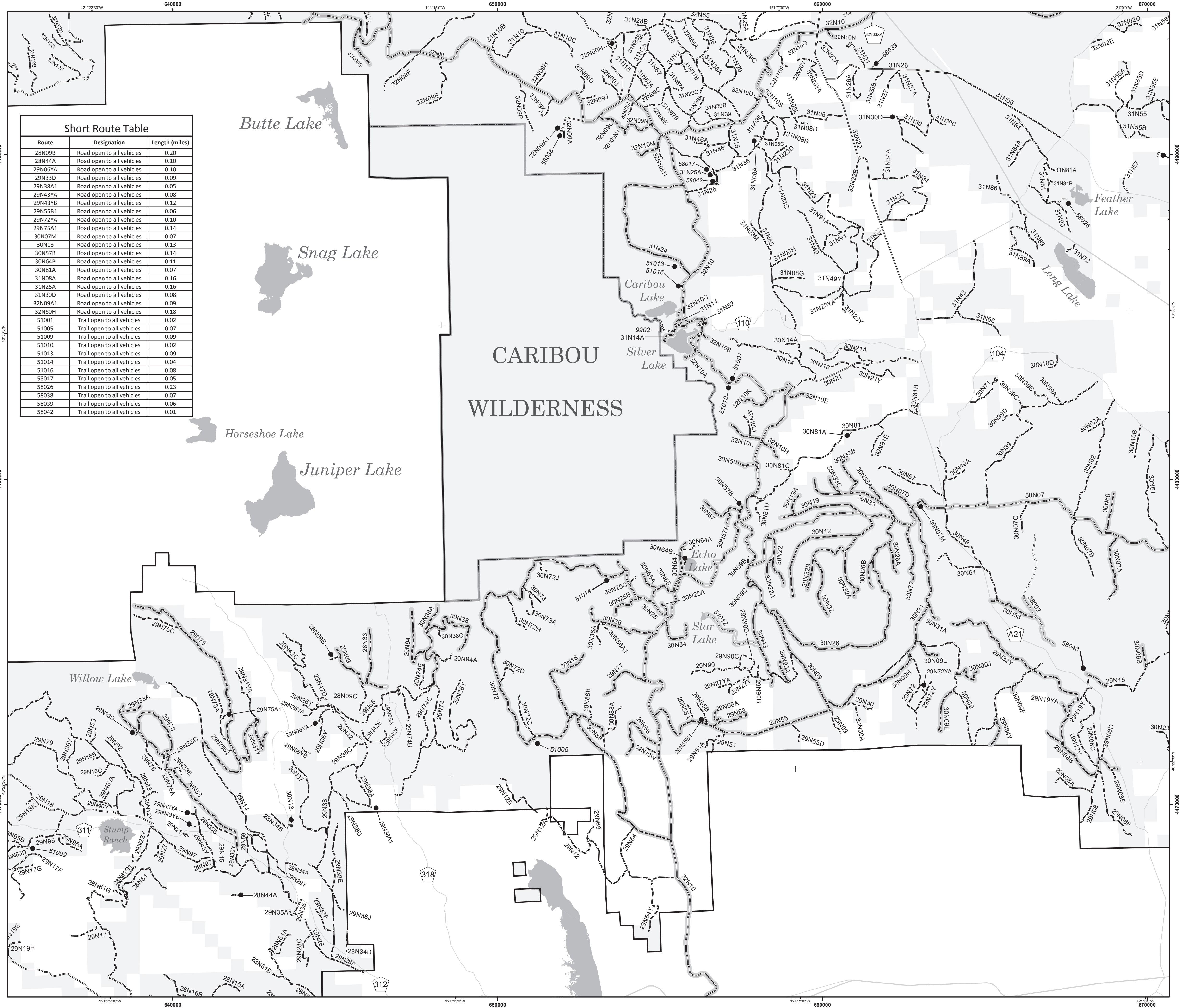
Short Route Identifier:
 This symbol is used for routes that are too short to show an actual symbol type on the map. The symbol contains the number of the road or trail. Users should refer to the corresponding number in the Short Route Table for designation information.

Other Public Roads and Trails:
 Highways, U.S., State
 Other Public Roads

These symbols are used to show routes the Forest Service does not have jurisdiction over and has not designated for motorized use. These symbols are part of the reference layers showing connections to towns and cities outside the forest boundary.



Route	Designation	Length (miles)
28N09B	Road open to all vehicles	0.20
28N44A	Road open to all vehicles	0.10
29N06YA	Road open to all vehicles	0.10
29N33D	Road open to all vehicles	0.09
29N38A1	Road open to all vehicles	0.05
29N43YA	Road open to all vehicles	0.08
29N43YB	Road open to all vehicles	0.12
29N55B1	Road open to all vehicles	0.06
29N72YA	Road open to all vehicles	0.10
29N75A1	Road open to all vehicles	0.14
30N07M	Road open to all vehicles	0.07
30N13	Road open to all vehicles	0.13
30N57B	Road open to all vehicles	0.14
30N64B	Road open to all vehicles	0.11
30N81A	Road open to all vehicles	0.07
31N08A	Road open to all vehicles	0.16
31N25A	Road open to all vehicles	0.16
31N30D	Road open to all vehicles	0.08
32N09A1	Road open to all vehicles	0.09
32N60H	Road open to all vehicles	0.18
51001	Trail open to all vehicles	0.02
51005	Trail open to all vehicles	0.07
51009	Trail open to all vehicles	0.09
51010	Trail open to all vehicles	0.02
51013	Trail open to all vehicles	0.09
51014	Trail open to all vehicles	0.04
51016	Trail open to all vehicles	0.08
58017	Trail open to all vehicles	0.05
58026	Trail open to all vehicles	0.23
58038	Trail open to all vehicles	0.07
58039	Trail open to all vehicles	0.06
58042	Trail open to all vehicles	0.01



Route Number	Legend	Special Vehicle Designation	Dates Allowed	Beginning Mile Post	Ending Mile Post
28N09, 28N33, 29N31Y, 29N33A, 29N70, 29N75, 29N94, 30N38, 30N38A	Roads open to all Vehicles, with Seasonal Designation	Seasonal Designation	05/01-11/30		
29N08, 29N08B, 29N09, 29N15, 29N15A, 29N19Y, 29N19YA, 29N32Y, 29N34Y, 29N55, 29N55B1, 29N56, 29N68, 29N68A, 29N77, 29N80A, 30N07A, 30N07D, 30N09C, 30N09E, 30N09F, 30N09H, 30N09J, 30N09L, 30N12, 30N18, 30N19, 30N19A, 30N22, 30N22A, 30N25A, 30N25B, 30N26, 30N26A, 30N26B, 30N31, 30N31A, 30N32, 30N32A, 30N32B, 30N33, 30N33A, 30N33B, 30N33C, 30N34, 30N36, 30N43, 30N50, 30N53, 30N57, 30N57A, 30N57B, 30N60, 30N65, 30N65A, 30N72, 30N77, 30N88, 31N14A, 31N24, 32N07, 32N09G, 32N09L, 32N09M, 32N09N1, 32N10B, 32N10E, 32N10H, 32N10K, 32N10L, 32N10M, 32N10N, 32N26	Roads open to all Vehicles, with Seasonal Designation	Seasonal Designation	04/01-12/25		
29N33D	Roads open to all Vehicles, with Seasonal Designation	Seasonal Designation	05/01-11/30	0.000	1.500
29N33	Roads open to all Vehicles, with Seasonal Designation	Seasonal Designation	05/01-11/30	1.550	4.000
30N07, 30N25, 30N84, 31N14, 31N82, 32N09, 32N10, 32N10A, 32N10C, 32N10G, 32N21	Roads open to highway legal vehicles only, with Seasonal Designation	Seasonal Designation	04/01-12/25		
30N09	Roads open to all Vehicles, with Seasonal Designation	Seasonal Designation	04/01-12/25	0.000	4.466
30N09	Roads open to all Vehicles, with Seasonal Designation	Seasonal Designation	04/01-12/25	5.216	5.497
51012, 58002, 58043	Trails open to all vehicles, with Seasonal Designation	Seasonal Designation	04/01-12/25		

